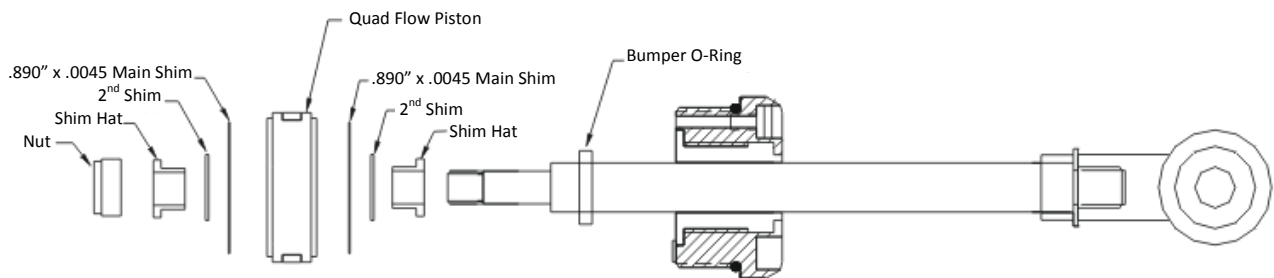




Quad Flow Shock Valving



- #3 – Compression - .890" x .0045" main shim (qty 1)
Rebound - .890" x .0045" main shim (qty 1)
- #4 - Compression - .890" x .0045" main shim (qty 1) / .709" x .006" (qty 1)
Rebound - .890" x .0045" main shim (qty 1) / .709" x .006" (qty 1)
- #5 - Compression - .890" x .0045" main shim (qty 1) / .709" x .008" (qty 1)
Rebound - .890" x .0045" main shim (qty 1) / .709" x .008" (qty 1)
- #6 - Compression - .890" x .0045" main shim (qty 1) / .709" x .012" (qty 1)
Rebound - .890" x .0045" main shim (qty 1) / .709" x .012" (qty 1)