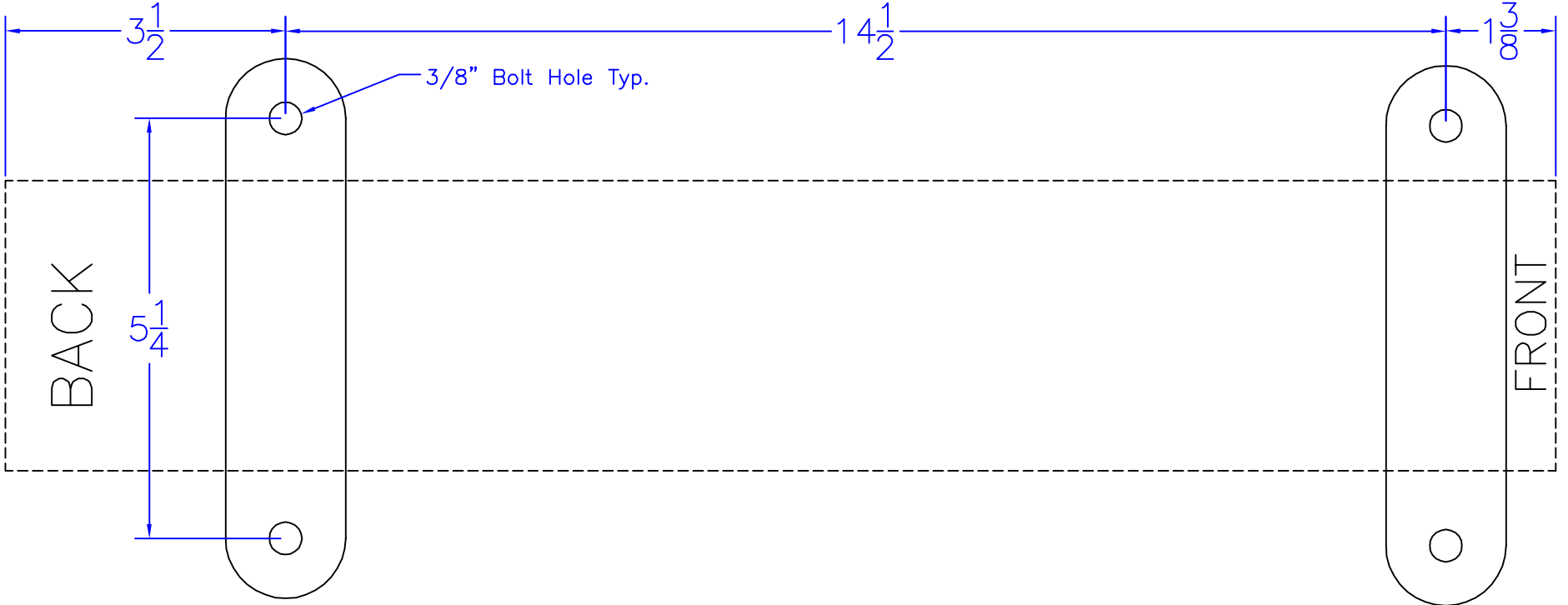


REVISION	DATE	BY	DESCRIPTION



**MB** MITTLER BROS. MACHINE & TOOL  
 10 COOPERATIVE WAY  
 WRIGHT CITY, MO 63390  
 (636) 745-7757

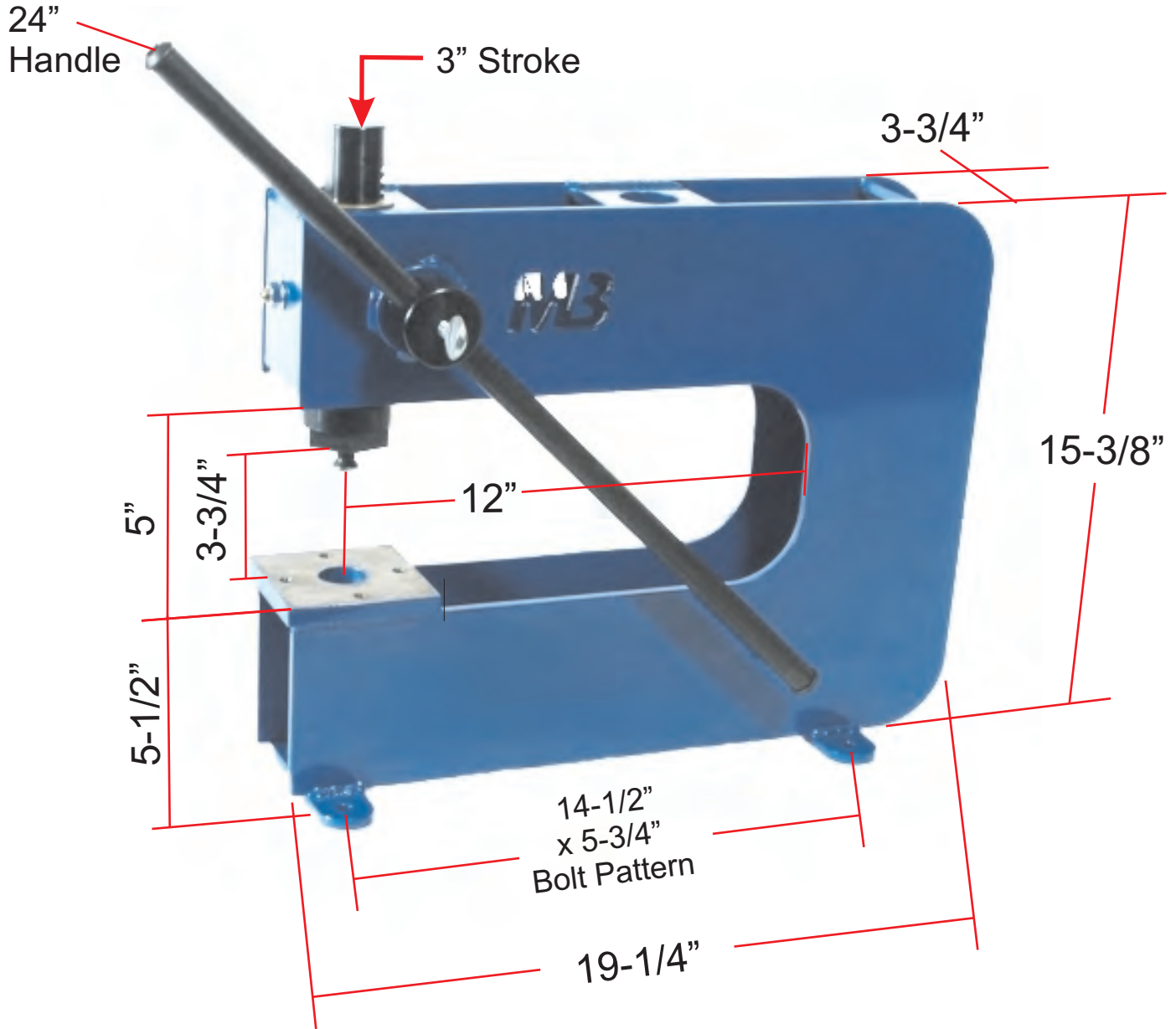
NO. REQ'D:	MATL.
CNC PROG. NO.	HT.:

.X	= ± .015
.XX	= ± .010
.XXX	= ± .005
FRAC.	= ± .015

Bench Press	
TITLE: Bolt Down Pattern	
DATE: 4/16/04	DR. BY: JEP
SHEET SIZE: A	UNITS: INCHES
SCALE: 1/2=1	NO.

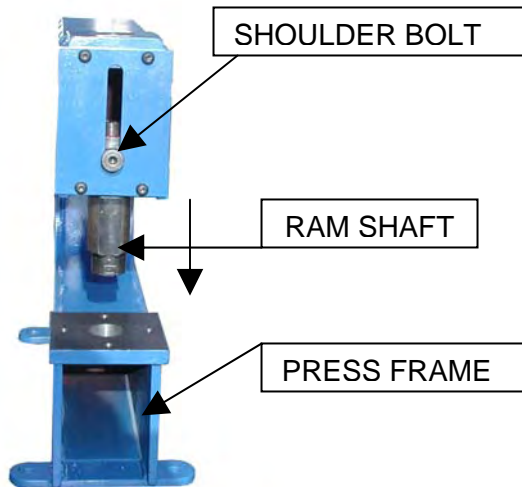
# 2200

## Manual Bench Press Dimensions



## ASSEMBLY INSTRUCTIONS FOR HYDRAULIC PRESS

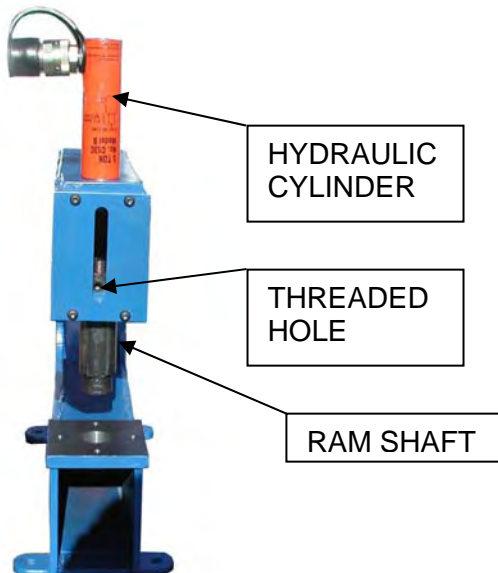
**STEP #1** REMOVE SHOULDER BOLT AND DROP RAM SHAFT OUT THE BOTTOM.



**STEP #2** THREAD HYD. CYL. ONTO PRESS FRAME TIGHTEN SECURELY.



**STEP #3** INSTALL RAM SHAFT TO HYDRAULIC CYLINDER & TIGHTEN SECURELY. BE SURE THREADED HOLE FOR SHOULDER BOLT IS VISIBLE IN THE SLOT.



**STEP #4** INSTALL SHOULDER BOLT & TIGHTEN SECURELY.



**STEP #5** INSTALL PRESS TOOLING TO SUIT. DO NOT OVER POWER PRESS AS DAMAGE COULD OCCUR TO PRESS, AND / OR TOOLING AND CAUSE **PERSONAL INJURY!**

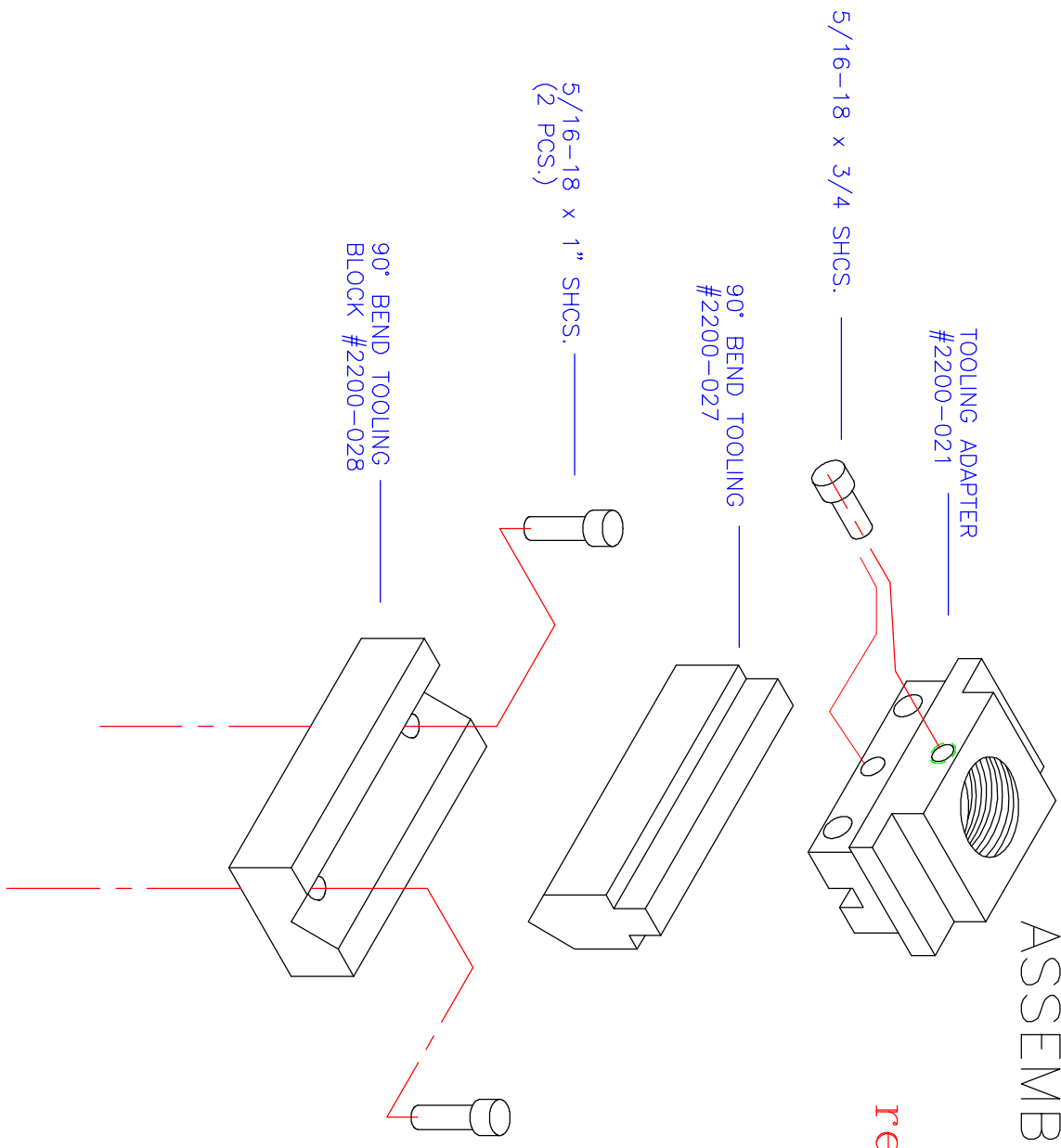
**MB** MITTLER BROS.  
MACHINE & TOOL

10 COOPERATIVE WAY  
WRIGHT CITY, MD 63390  
(636) 745-7757

BENCH PRESS  
90° BEND TOOLING  
ASSEMBLY #2200-90DA

1/12/99

rev. 3-25-2004

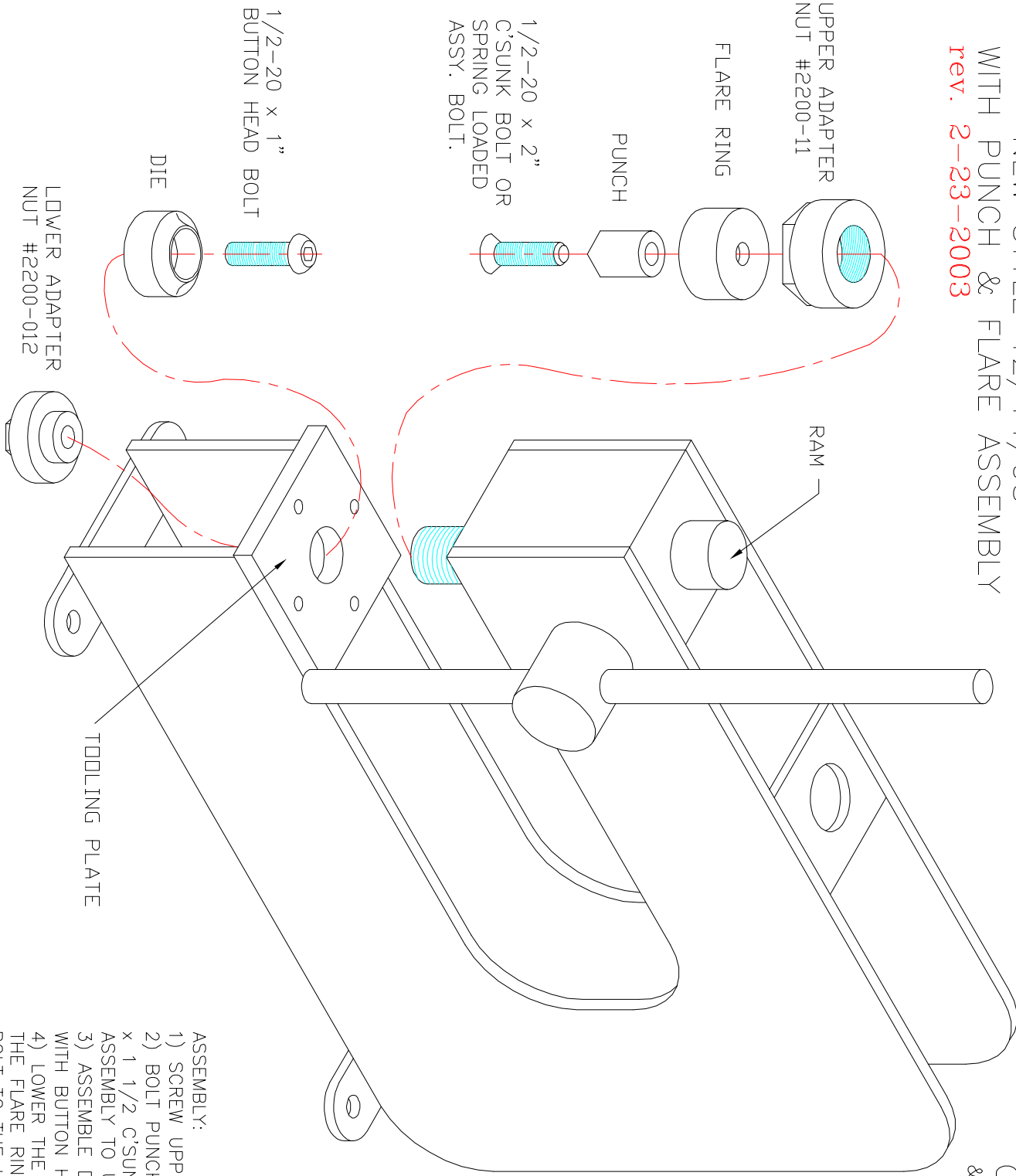


PRESS  
 NEW STYLE 12/14/98  
 WITH PUNCH & FLARE ASSEMBLY  
 rev. 2-23-2003

MAXIMUM  
 CAPACITY Ø3 PUNCH  
 & FLARE 16 GAGE STEEL

SAFETY!  
 GOOD JUDGMENT AND A SAFE ATTITUDE SHOULD BE APPLIED AT ALL TIMES  
 \* KEEP ALL BODY PARTS AND FOREIGN OBJECTS OUT OF PUNCH AND RAM AREA, WHILE IN OPERATION.  
 \* ALWAYS WEAR SAFETY GLASS WHILE OPERATING MACHINE.  
 \* DO NOT OPERATE UNDER THE INFLUENCE OF DRUGS & ALCOHOL.

NEW STYLE PUNCH & FLARES HAVE TAP ON FEMALE END (FLARE RING) IF CUSTOMER HAS OLD & NEW STYLE PUNCH & FLARE & PRESS WITH OLD STYLE, THEN THEY NEED:  
 1) NEW UPPER ADAPTER NUT #2200-011  
 2) NEW 1/2-20 x 2" C' SUNK BOLT  
 3) NEW 1/2-20 x 1" BUTTON HEAD BOLT.  
 \$25.00 FOR ALL 3 ITEMS. ADAPTS NEW STYLE PUNCHES TO PRESS.



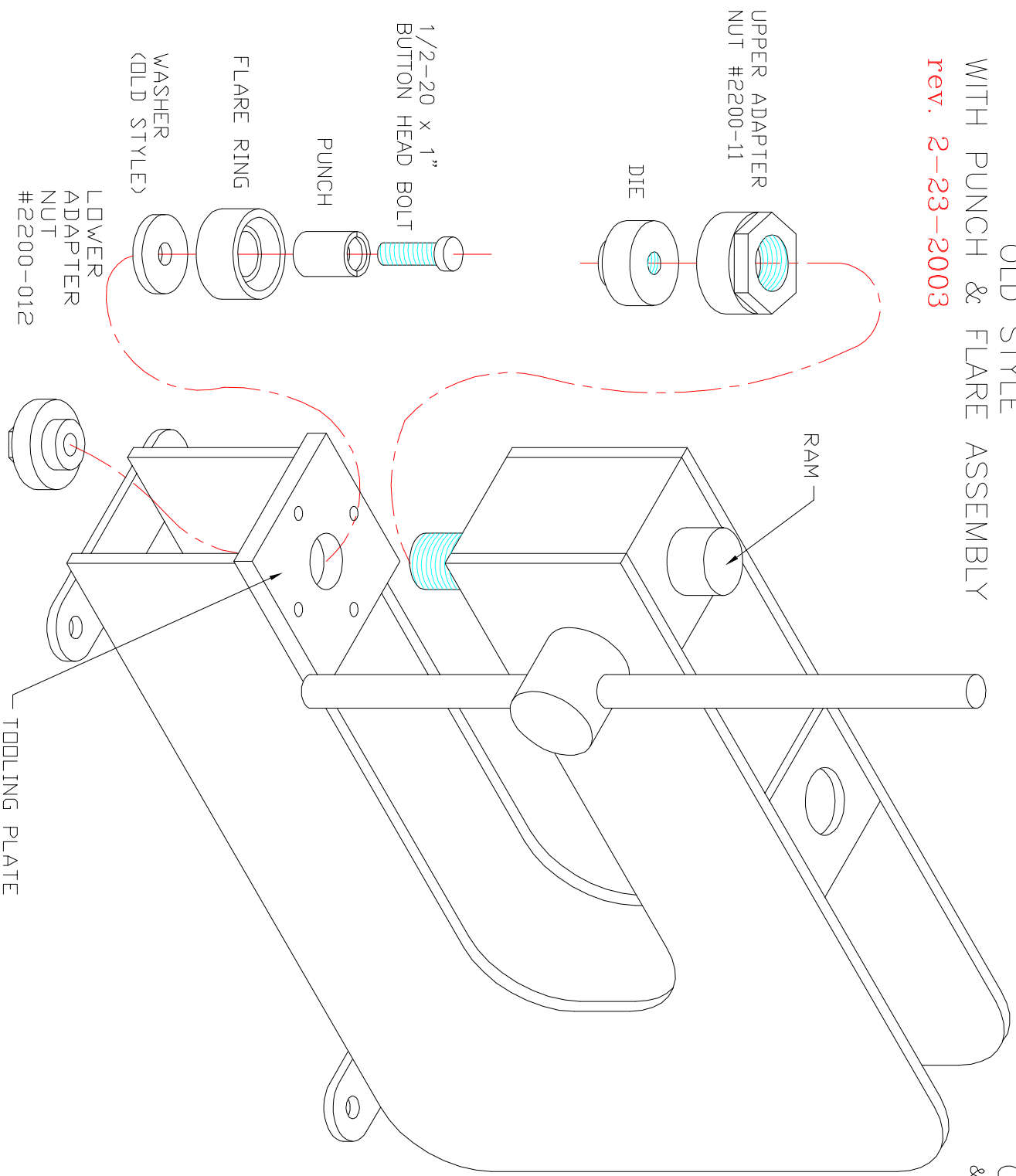
ASSEMBLY:

- 1) SCREW UPPER ADAPTER NUT ONTO RAM.
- 2) BOLT PUNCH TO FLARE RING WITH 1/2-20 x 1 1/2 C'SUNK BOLT THEN THREAD ASSEMBLY TO UPPER NUT.
- 3) ASSEMBLE DIE AND LOWER NUT ADAPTER WITH BUTTON HEAD BOLT. (AS SHOWN)
- 4) LOWER THE RAM TO ALIGN THE DIE AND THE FLARE RING, BEFORE TIGHTENING THE BOLT TO THE LOWER ADAPTER NUT.

THANK YOU FOR PURCHASING MITTLER BROS. EQUIPMENT

PRESS  
 OLD STYLE  
 WITH PUNCH & FLARE ASSEMBLY  
 rev. 2-23-2003

MAXIMUM  
 CAPACITY Ø3 PUNCH  
 & FLARE 16 GAGE STEEL

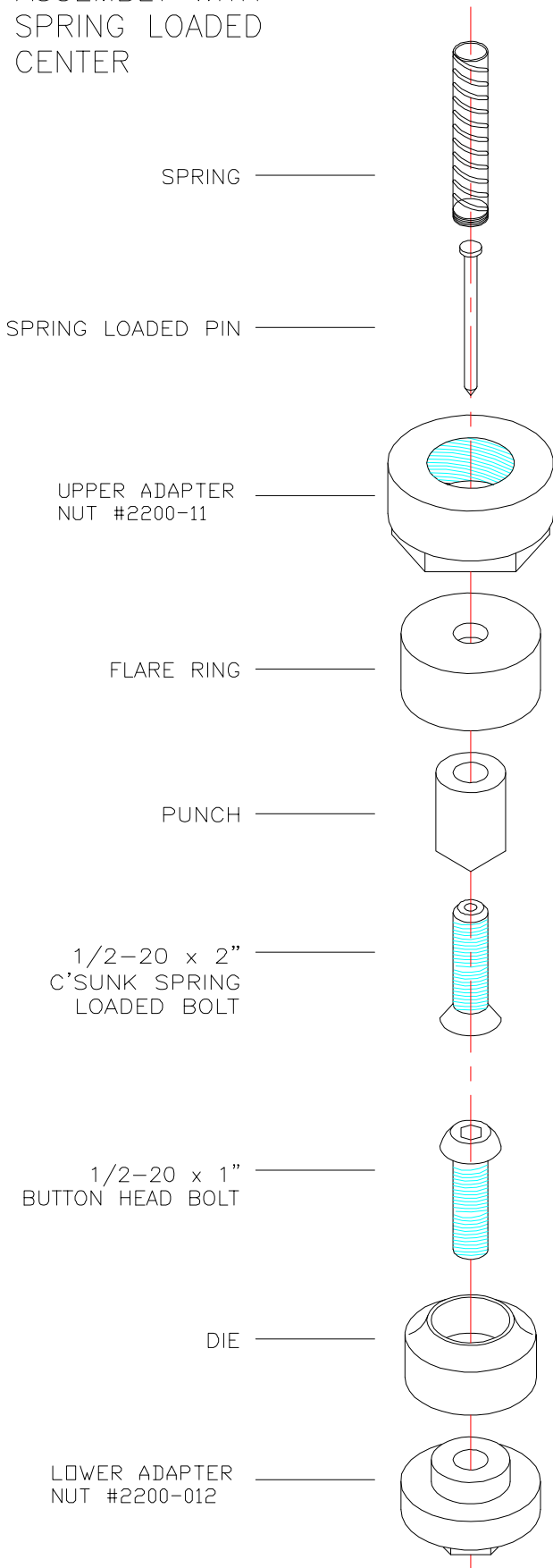


**SAFETY!**  
 GOOD JUDGMENT AND A SAFE ATTITUDE SHOULD BE APPLIED AT ALL TIMES  
 \* KEEP ALL BODY PARTS AND FOREIGN OBJECTS OUT OF PUNCH AND RAM AREA, WHILE IN OPERATION.  
 \* ALWAYS WEAR SAFETY GLASS WHILE OPERATING MACHINE.  
 \* DO NOT OPERATE UNDER THE INFLUENCE OF DRUGS & ALCOHOL.

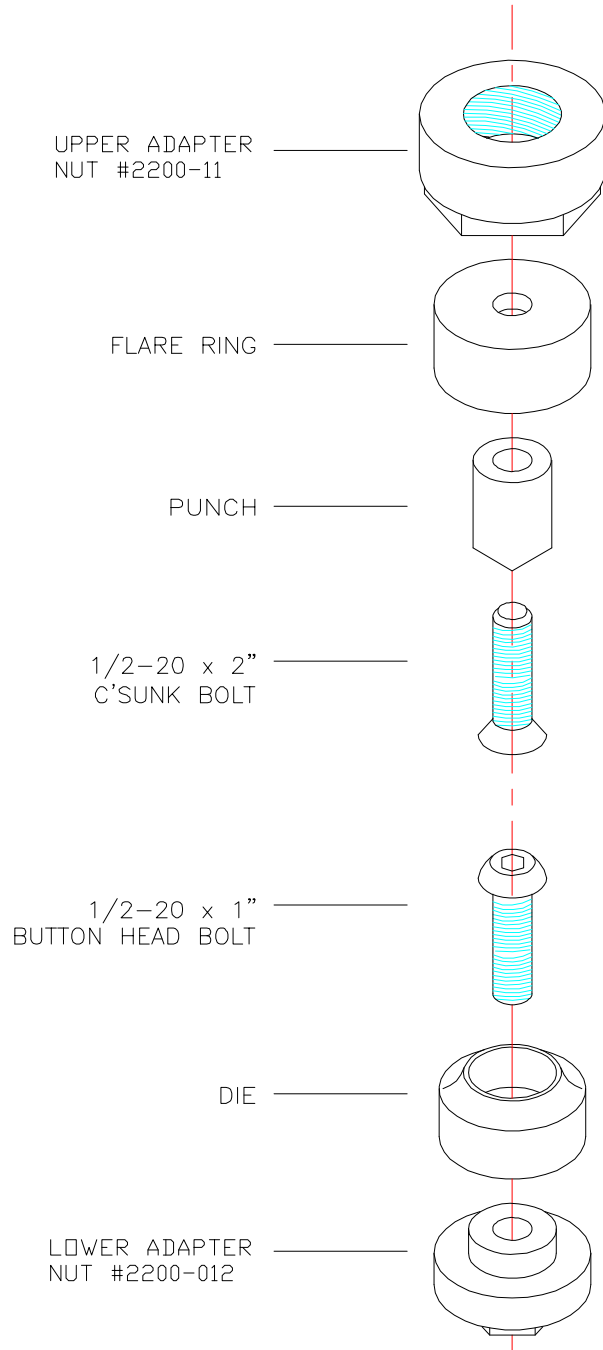
NEW STYLE PUNCH & FLARES HAVE TAP ON FEMALE END (FLARE RING) IF CUSTOMER HAS OLD & NEW STYLE PUNCH & FLARE & PRESS WITH OLD STYLE. THEN THEY NEED:  
 1) NEW UPPER ADAPTER NUT #2200-011  
 2) NEW 1/2-20 x 2" C' SUNK BOLT  
 3) NEW 1/2-20 x 1" BUTTON HEAD BOLT.  
 \$25.00 FOR ALL 3 ITEMS.  
 ADAPTS NEW STYLE PUNCHES TO PRESS.

THANK YOU FOR PURCHASING MITTLER BROS. EQUIPMENT

PUNCH AND FLARE  
ASSEMBLY WITH  
SPRING LOADED  
CENTER



PUNCH AND FLARE  
ASSEMBLY WITH OUT  
SPRING LOADED  
CENTER



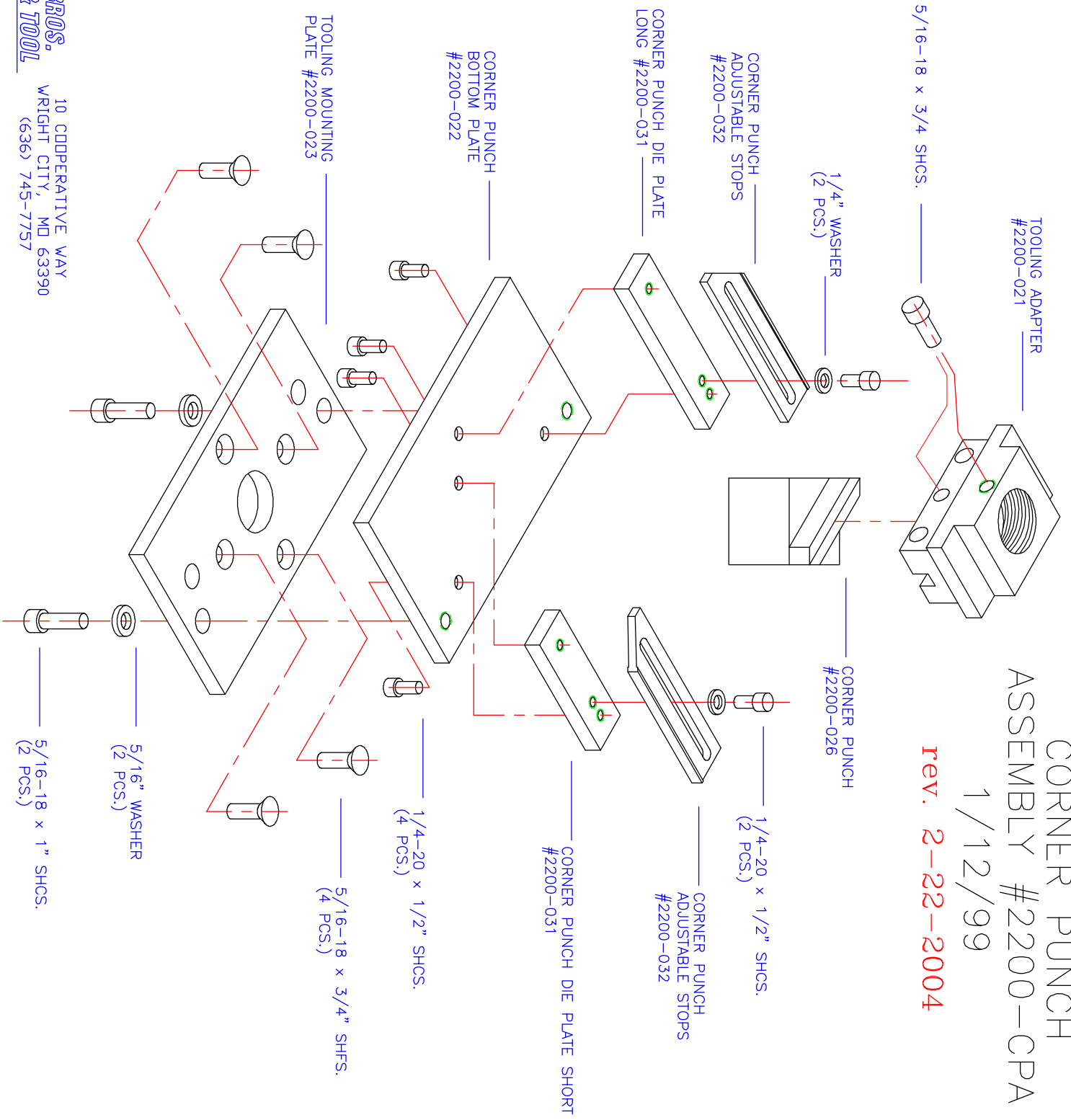
rev. 2-23-2003

**MB** MITTLER BROS.  
MACHINE & TOOL

10 COOPERATIVE WAY  
WRIGHT CITY, MD 63390  
(636) 745-7757

BENCH PRESS  
CORNER PUNCH  
ASSEMBLY #2200-CPA  
1/12/99

rev. 2-22-2004



TOOLING ADAPTER  
#2200-021

5/16-18 x 3/4 SHCS.

1/4" WASHER  
(2 PCS.)

CORNER PUNCH  
ADJUSTABLE STOPS  
#2200-032

CORNER PUNCH DIE PLATE  
LONG #2200-031

CORNER PUNCH  
#2200-026

1/4-20 x 1/2" SHCS.  
(2 PCS.)

CORNER PUNCH  
ADJUSTABLE STOPS  
#2200-032

CORNER PUNCH DIE PLATE SHORT  
#2200-031

1/4-20 x 1/2" SHCS.  
(4 PCS.)

5/16-18 x 3/4" SHCS.  
(4 PCS.)

TOOLING MOUNTING  
PLATE #2200-023

CORNER PUNCH  
BOTTOM PLATE  
#2200-022

5/16" WASHER  
(2 PCS.)

5/16-18 x 1" SHCS.  
(2 PCS.)



# BENCH PRESS HOLE PUNCH ASSEMBLY

1/12/99

rev. 2-22-2004

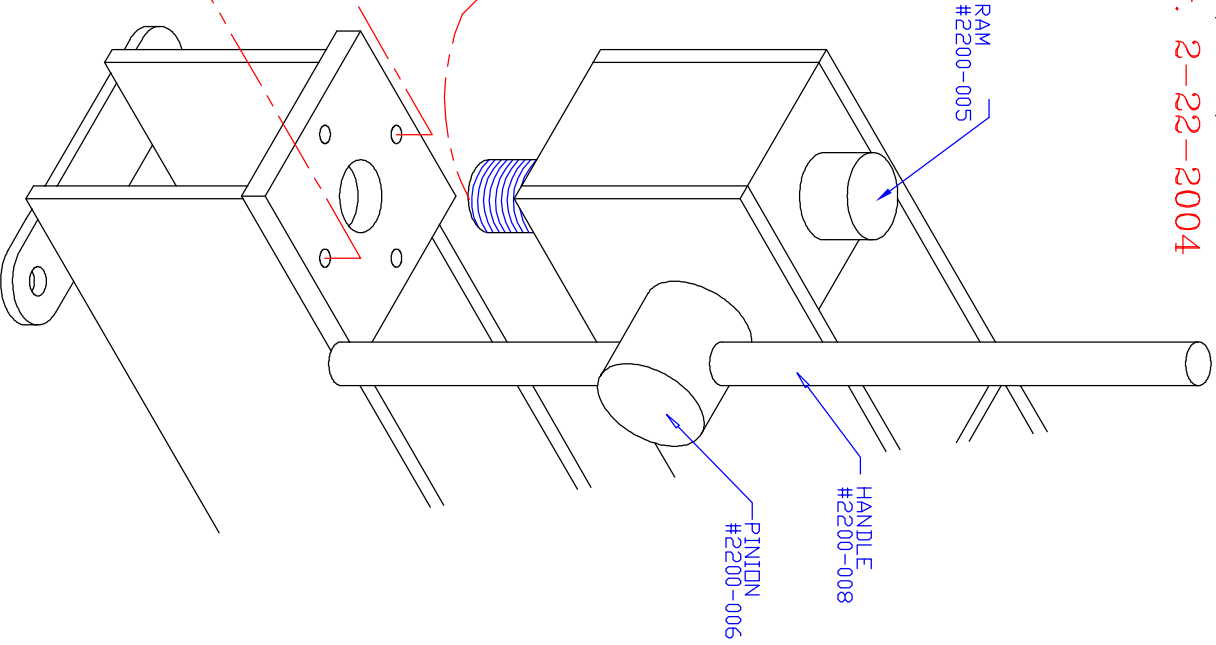
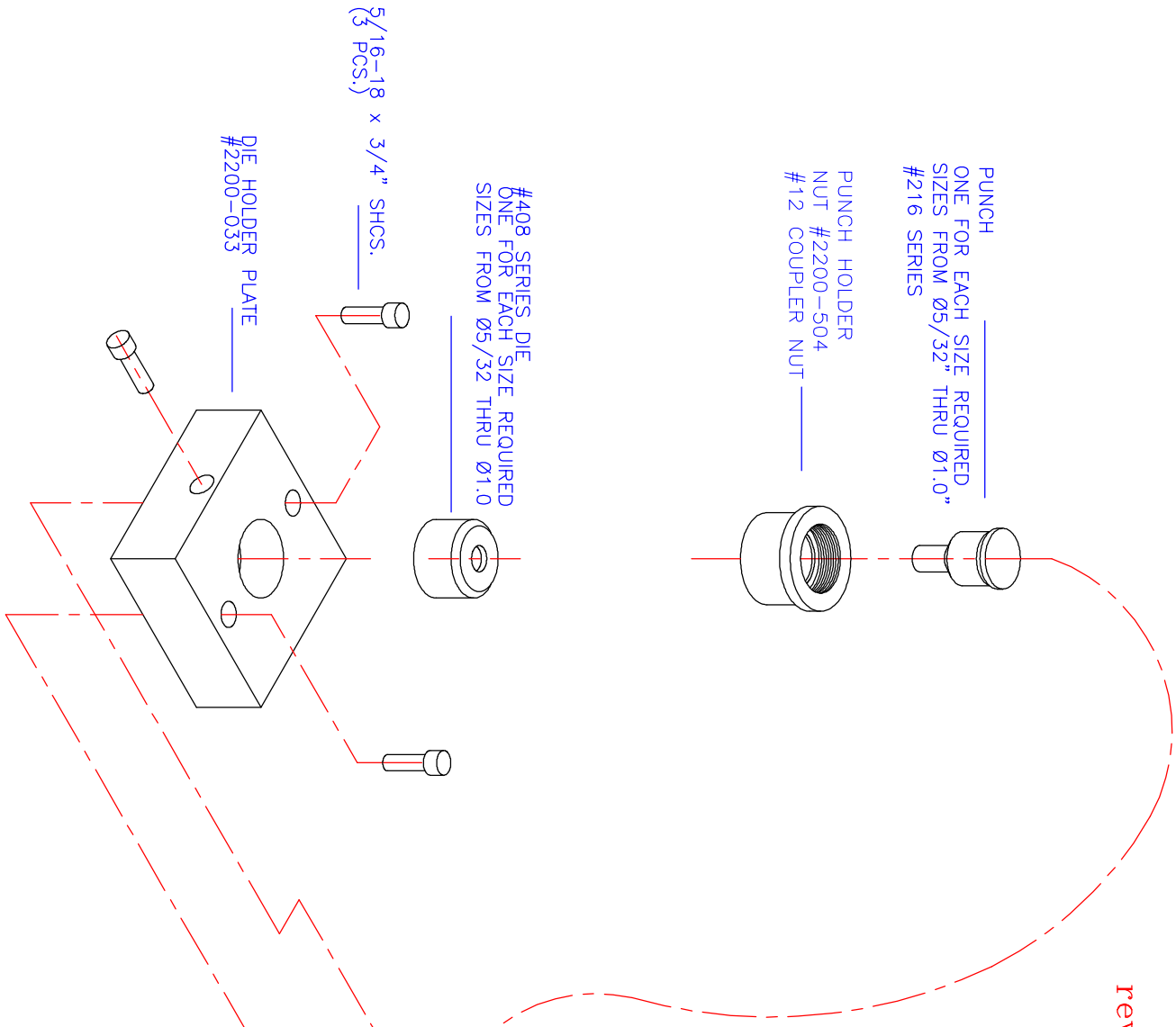
PUNCH  
ONE FOR EACH SIZE REQUIRED.  
SIZES FROM Ø5/32" THRU Ø1.0"  
#216 SERIES

PUNCH HOLDER  
NUT #2200-504  
#12 COUPLER NUT

#408 SERIES DIE  
ONE FOR EACH SIZE REQUIRED  
SIZES FROM Ø5/32 THRU Ø1.0

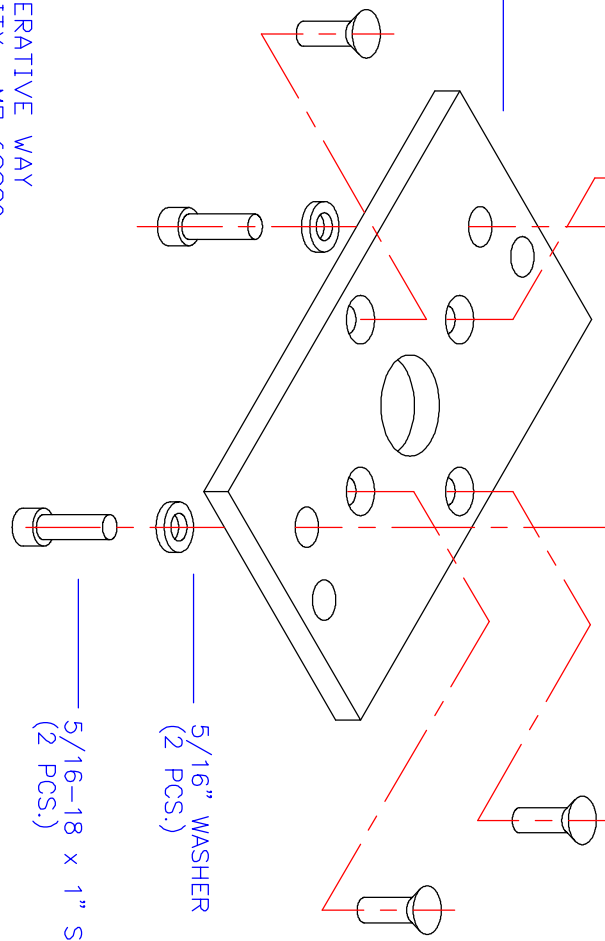
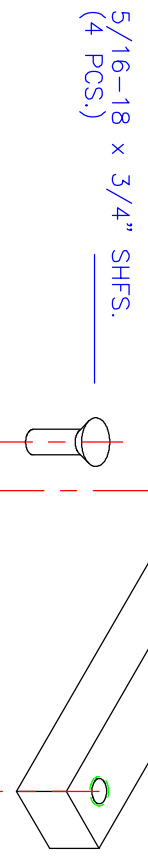
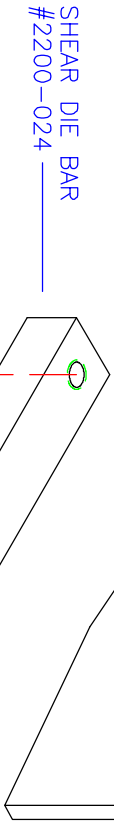
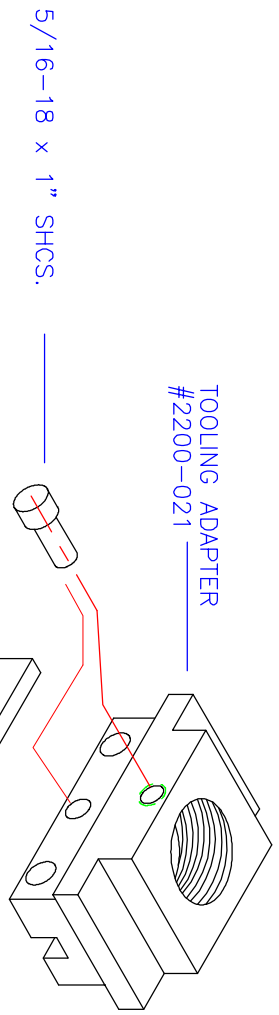
5/16-18 x 3/4" SHCS.  
(3 PCS.)

DIE HOLDER PLATE  
#2200-033



**MB** MITTLER BROS.  
MACHINE & TOOL

10 COOPERATIVE WAY  
WRIGHT CITY, MD 63390  
(636) 745-7757



BENCH PRESS  
SHEAR TOOLING  
ASSEMBLY #2200-SA  
1/12/99

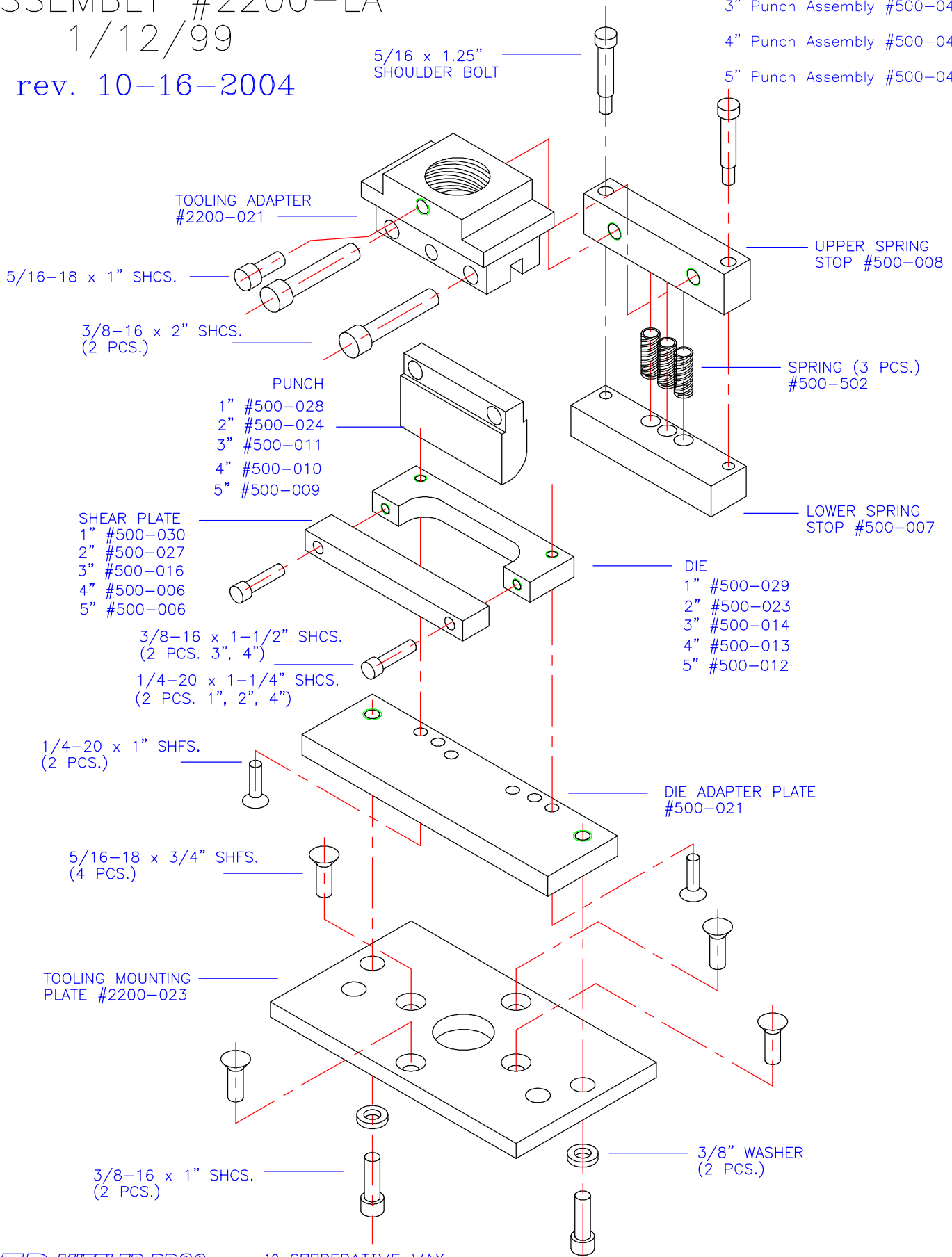
rev. 8/30/04

# BENCH PRESS LOUVER TOOLING ASSEMBLY #2200-LA

1/12/99

rev. 10-16-2004

- 1" Punch Assembly #500-041
- 2" Punch Assembly #500-042
- 3" Punch Assembly #500-043
- 4" Punch Assembly #500-044
- 5" Punch Assembly #500-045



5/16 x 1.25"  
SHOULDER BOLT

TOOLING ADAPTER  
#2200-021

5/16-18 x 1" SHCS.

3/8-16 x 2" SHCS.  
(2 PCS.)

PUNCH

- 1" #500-028
- 2" #500-024
- 3" #500-011
- 4" #500-010
- 5" #500-009

SHEAR PLATE

- 1" #500-030
- 2" #500-027
- 3" #500-016
- 4" #500-006
- 5" #500-006

3/8-16 x 1-1/2" SHCS.  
(2 PCS. 3", 4")

1/4-20 x 1-1/4" SHCS.  
(2 PCS. 1", 2", 4")

1/4-20 x 1" SHFS.  
(2 PCS.)

5/16-18 x 3/4" SHFS.  
(4 PCS.)

TOOLING MOUNTING  
PLATE #2200-023

3/8-16 x 1" SHCS.  
(2 PCS.)

UPPER SPRING  
STOP #500-008

SPRING (3 PCS.)  
#500-502

LOWER SPRING  
STOP #500-007

DIE

- 1" #500-029
- 2" #500-023
- 3" #500-014
- 4" #500-013
- 5" #500-012

DIE ADAPTER PLATE  
#500-021

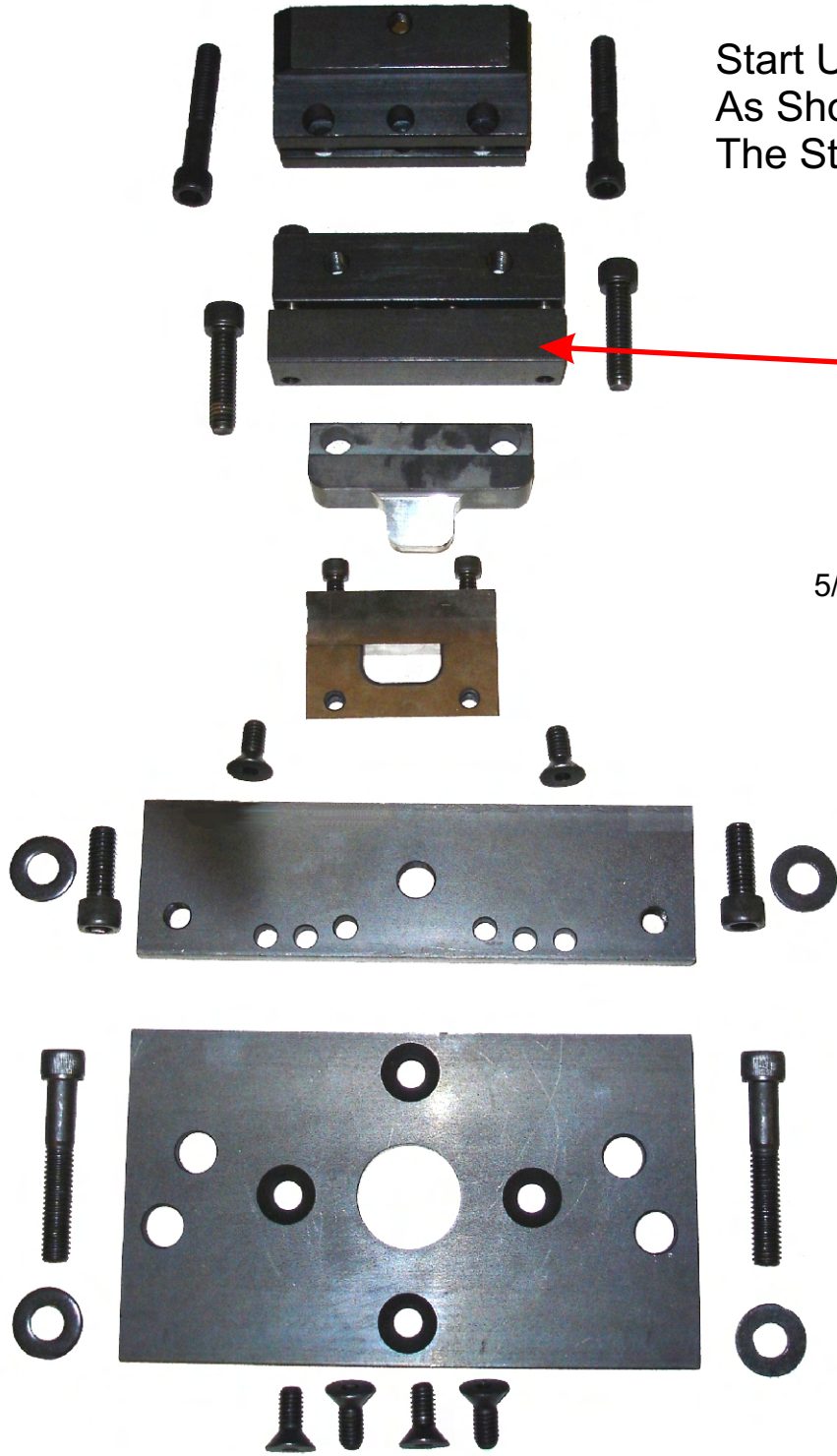
3/8" WASHER  
(2 PCS.)

10 COOPERATIVE WAY  
WRIGHT CITY, MD 63390  
(636) 745-7757

# Bench Press

## Start Up Louver Punch Kits

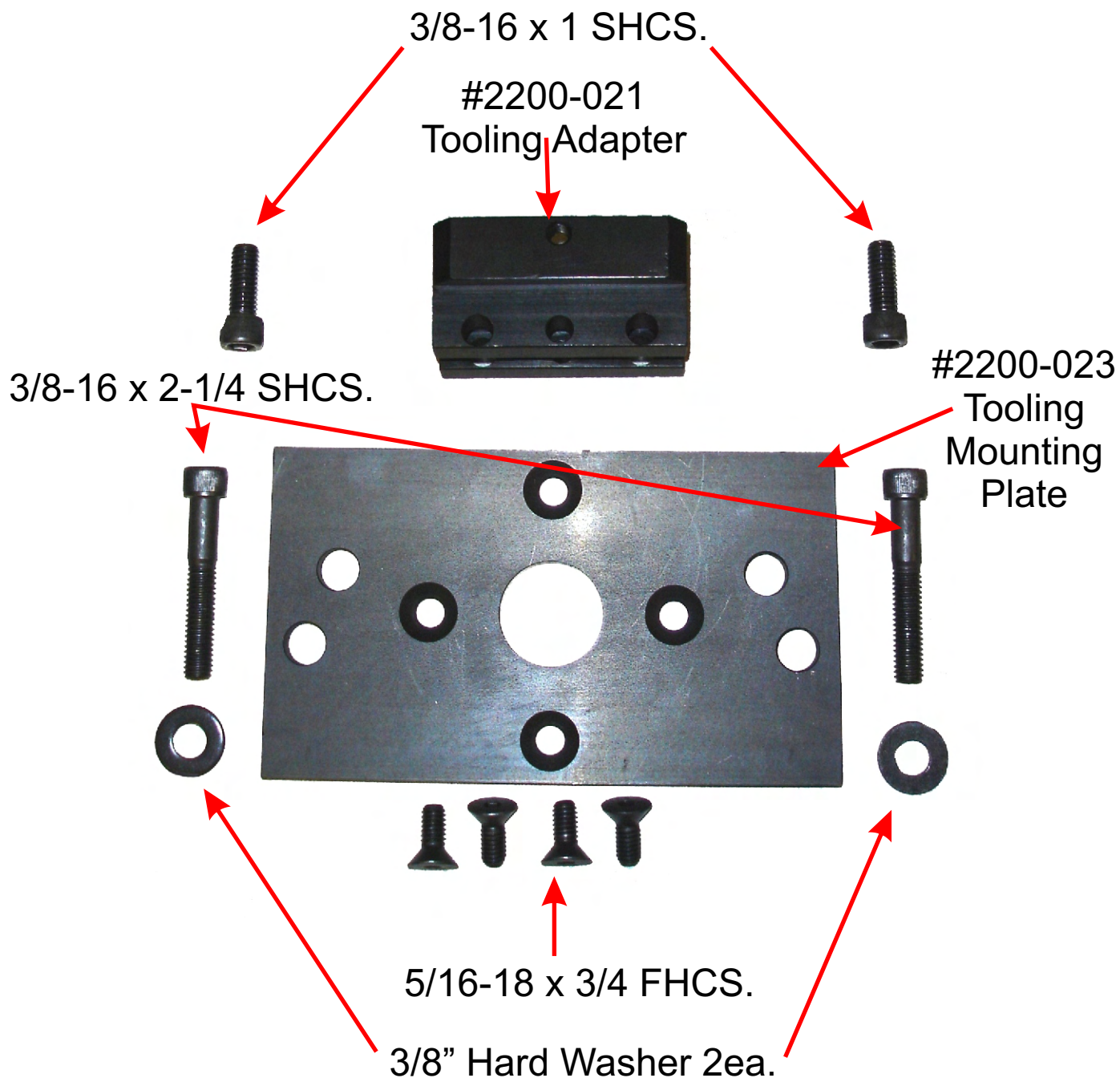
- #2200-LA-01 1" Kit
- #2200-LA-02 2" Kit
- #2200-LA-03 3" Kit
- #2200-LA-04 4" Kit
- #2200-LA-05 5" Kit



Start Up Kits Include All Parts As Shown on Pages 2 & 3 Plus The Stripper Assm. Shown Here.

#500-050  
Stripper Assy.  
consisting of:  
#500-008 Upper Block  
#500-007 Lower Block  
#500-502 Spring 3ea.  
5/16 x1-1/4 Shoulder Bolt 2ea.

# **Bench Press Tooling Adapter Kit #2200.TA**



# Bench Press

## Louver Punch Assemblies

- #500-041 1" Assy.    #500-042 2" Assy.**  
**#500-043 3" Assy.    #500-044 4" Assy.**  
**#500-45 5" Assy.**

- #500-029 1" Die  
 #500-023 2" Die  
 #500-014 3" Die  
 #500-013 4" Die  
 #500-012 5" Die

- #500-028 1" Punch  
 #500-024 2" Punch  
 #500-011 3" Punch  
 #500-010 4" Punch  
 #500-009 5" Punch

- #500-030 1" Shear Plate  
 #500-027 2" Shear Plate  
 #500-016 3" Shear Plate  
 #500-006 4"/ 5" Shear Plate  
 #500-006 4"/ 5" Shear Plate

3/8-16 x 2-1/4 SHCS 2ea.



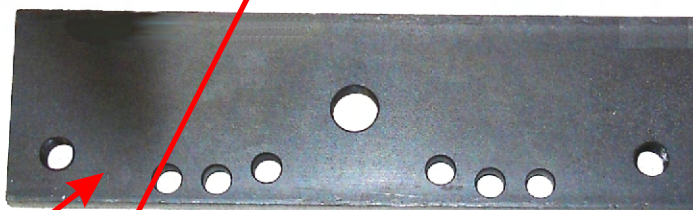
5/16-18 x 3/4 FHCS. 2ea.  
 Not With 4" & 5"



3/8-16 x 1 2ea.



1/4-20 x 1-1/4 SHCS 2ea.  
 Not with 4" & 5"



Die Adapter Plate  
 #500-021  
 Not with 4" & 5"



3/8" Hard Washer 2ea.  
 Not With 4" & 5"

- #500-061 1" Urethane Insert (not shown)  
 #500-062 2" Urethane Insert (not shown)  
 #500-063 3" Urethane Insert (not shown)  
 #500-064 4" Urethane Insert (not shown)  
 #500-065 5" Urethane Insert (not shown)



3/8-16 x 1-1/2 SHCS 2ea.  
 4" & 5" Only