

SHRINKER/STRETCHER EXPLODED ASSEMBLY 12/5/95

REV. 11-21-2005

REV. 9-15-2010

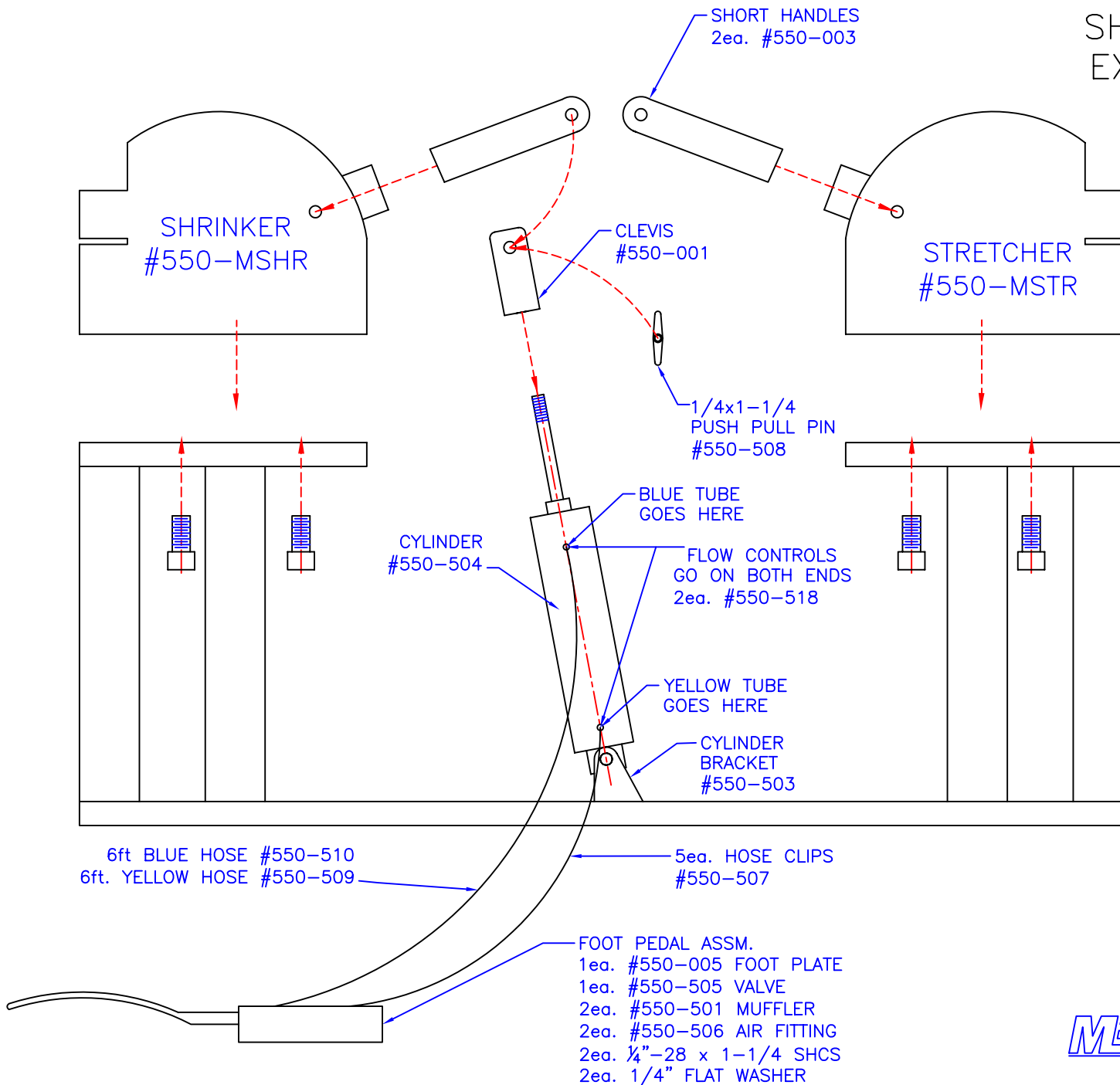
#550

CONTENTS INCLUDE:

QTY.	DISCRPTION
4	3/8" X 1" BOLTS TO MOUNT UNITS
2	#550-518 FLOW CONTROLS FOR CYLINDERS
2	#550-003 SHORT HANDLES
1	#550-001 CLEVIS
1	#550-508 1/4" PUSH PULL PIN
1	#550-505 FOOT VALVE
1	#550-005 FOOT PLATE
2	#550-506 AIR FITTING
2	#550-501 MUFFLER
6'	#550-509 YELLOW 1/4" TUBE
6'	#550-510 BLUE 1/4" TUBE
5	#550-507 PLASTIC HOSE CLIPS
1	#550-504 CYLINDER
1	#550-503 CYLINDER BRACKET
1	#550-509 FRAME ASSM.

#560

560-004 FRAME BASE
550-517 CYL
550-519 PIVOT BRACKET



- FOOT PEDAL ASSM.
- 1ea. #550-005 FOOT PLATE
- 1ea. #550-505 VALVE
- 2ea. #550-501 MUFFLER
- 2ea. #550-506 AIR FITTING
- 2ea. 1/4"-28 x 1-1/4 SHCS
- 2ea. 1/4" FLAT WASHER

MB MITTLER BROS. 10 COOPERATIVE WAY
MACHINE & TOOL WRIGHT CITY, MD 63390
(636) 745-7757

