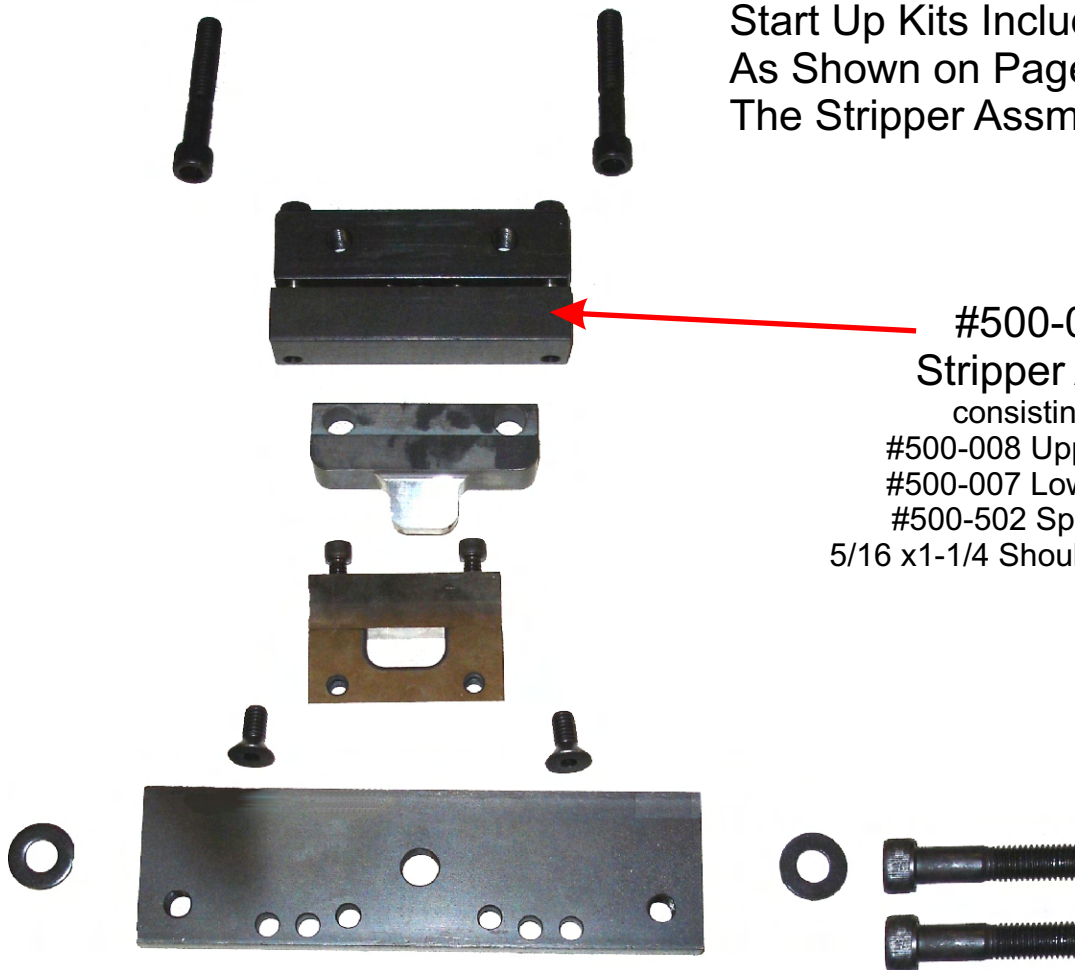


Louver Press

Start Up Louver Punch Kits

- #500-LA-041 1" Kit
- #500-LA-042 2" Kit
- #500-LA-043 3" Kit
- #500-LA-044 4" Kit
- #500-LA-045 5" Kit



Start Up Kits Include All Parts
As Shown on Page 2 Plus
The Stripper Assm. Shown Here.

#500-050
Stripper Assy.
consisting of:
#500-008 Upper Block
#500-007 Lower Block
#500-502 Spring 3ea.
5/16 x1-1/4 Shoulder Bolt 2ea.

Louver Press

Louver Punch Assemblies

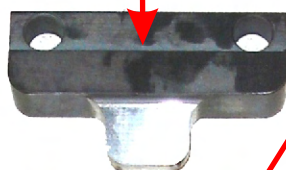
- #500-041 1" Assy. #500-042 2" Assy.**
#500-043 3" Assy. #500-044 4" Assy.
#500-45 5" Assy.

- #500-029 1" Die
 #500-023 2" Die
 #500-014 3" Die
 #500-013 4" Die
 #500-012 5" Die

- #500-028 1" Punch
 #500-024 2" Punch
 #500-011 3" Punch
 #500-010 4" Punch
 #500-009 5" Punch

- #500-030 1" Shear Plate
 #500-027 2" Shear Plate
 #500-016 3" Shear Plate
 #500-006 4"/ 5" Shear Plate
 #500-006 4"/ 5" Shear Plate

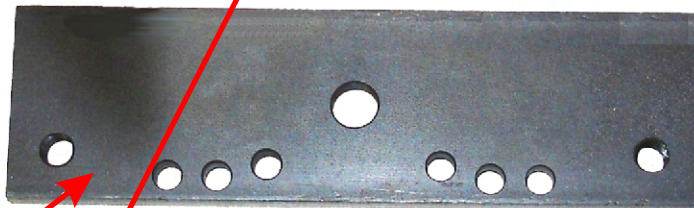
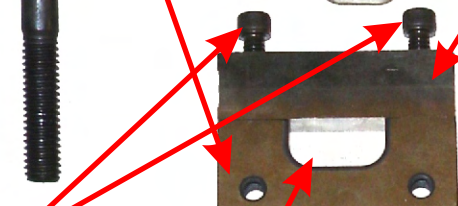
3/8-16 x 2-1/4 SHCS 2ea.



5/16-18 x 3/4 FHCS. 2ea.
 Not With 4" & 5"



1/4-20 x 1-1/4 SHCS 2ea.
 Not with 4" & 5"



Die Adapter Plate
 #500-021
 Not with 4" & 5"



3/8" Hard Washer 2ea.

- #500-061 1" Urethane Insert (not shown)
 #500-062 2" Urethane Insert (not shown)
 #500-063 3" Urethane Insert (not shown)
 #500-064 4" Urethane Insert (not shown)
 #500-065 5" Urethane Insert (not shown)



3/8-16 x 1-1/2 SHCS
 2ea. for 1", 2" & 3"
 4ea. for 4" & 5"