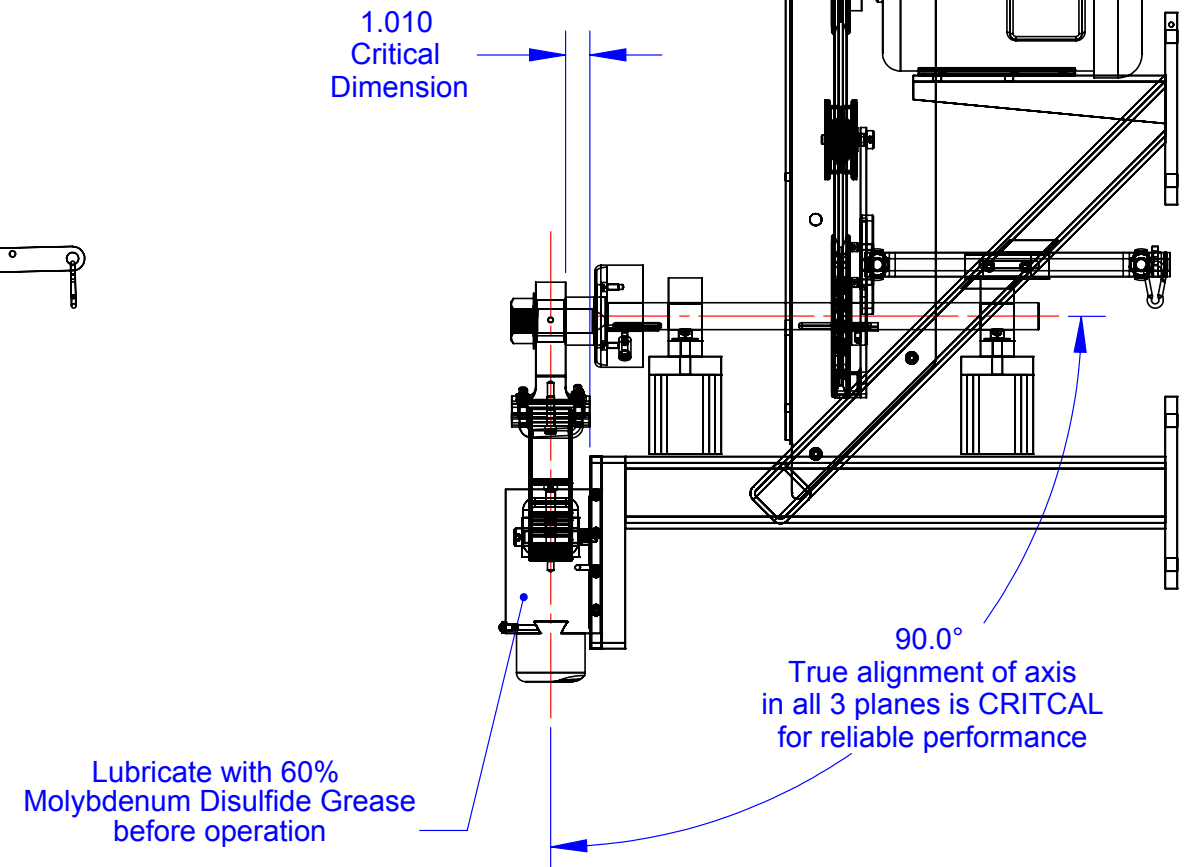
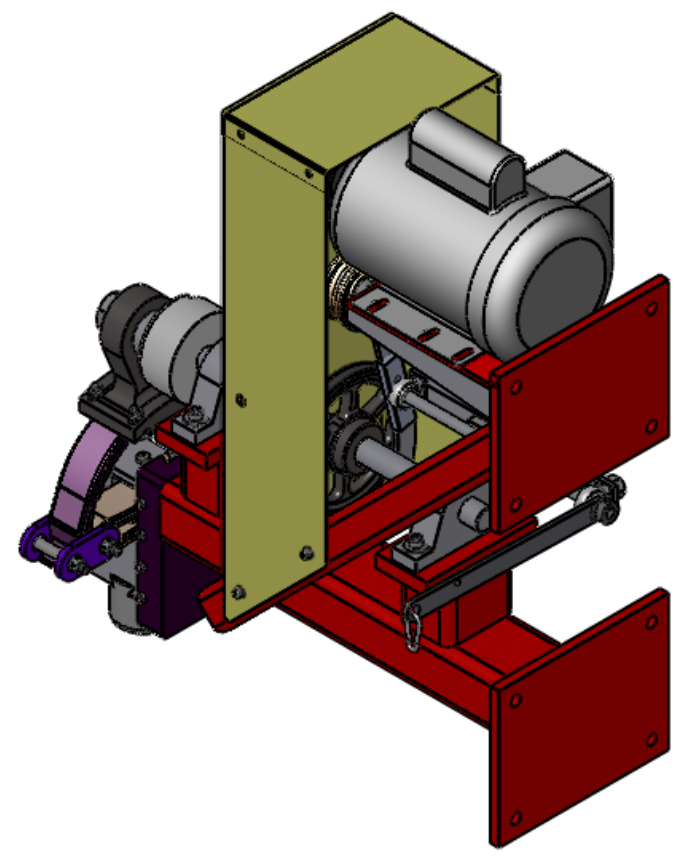
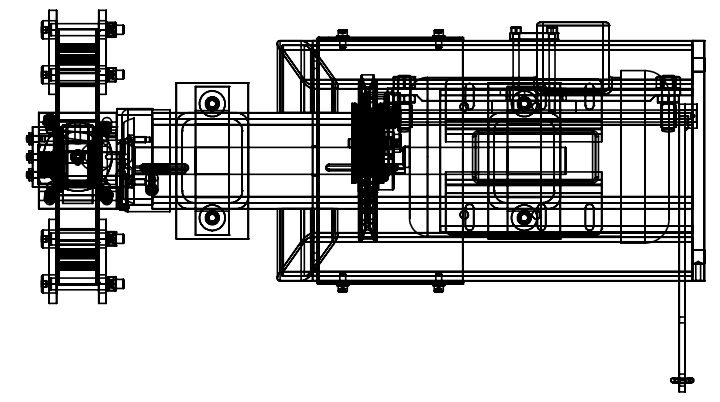
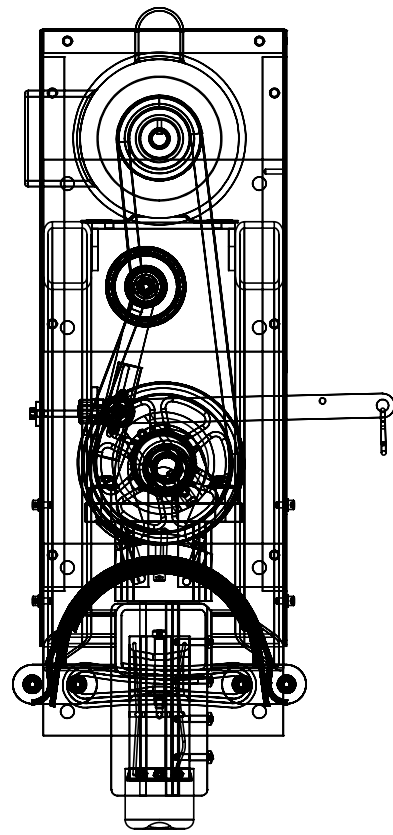


8 7 6 5 4 3 2 1

D
C
B
A

D
C
B
A



PROPRIETARY AND CONFIDENTIAL
THE INFORMATION CONTAINED IN THIS DRAWING IS THE SOLE PROPERTY OF MITTLER BROS. MACHINE & TOOL. ANY REPRODUCTION IN PART OR AS A WHOLE WITHOUT THE WRITTEN PERMISSION OF MITTLER BROS. MACHINE & TOOL IS PROHIBITED.

UNLESS OTHERWISE SPECIFIED:		NAME	DATE
DIMENSIONS ARE IN INCHES		DRAWN	BAB 11/2/10
TOLERANCES:		CHECKED	
FRACTIONAL ±.015		ENG APPR.	
ONE PLACE DECIMAL ±.015		MFG APPR.	
TWO PLACE DECIMAL ±.010		Q.A.	
THREE PLACE DECIMAL ±.005			
ANGULAR ± 1°			
QUANTITY	MATERIAL	FINISH LENGTH	COMMENTS
NEXT ASSY	USED ON	FINISH	DO NOT SCALE DRAWING
APPLICATION			

M3 MITTLER BROS. MACHINE & TOOL
10 Cooperative Way, Wright City MO. 63390
(636)745-7757 Fax (636)745-2874

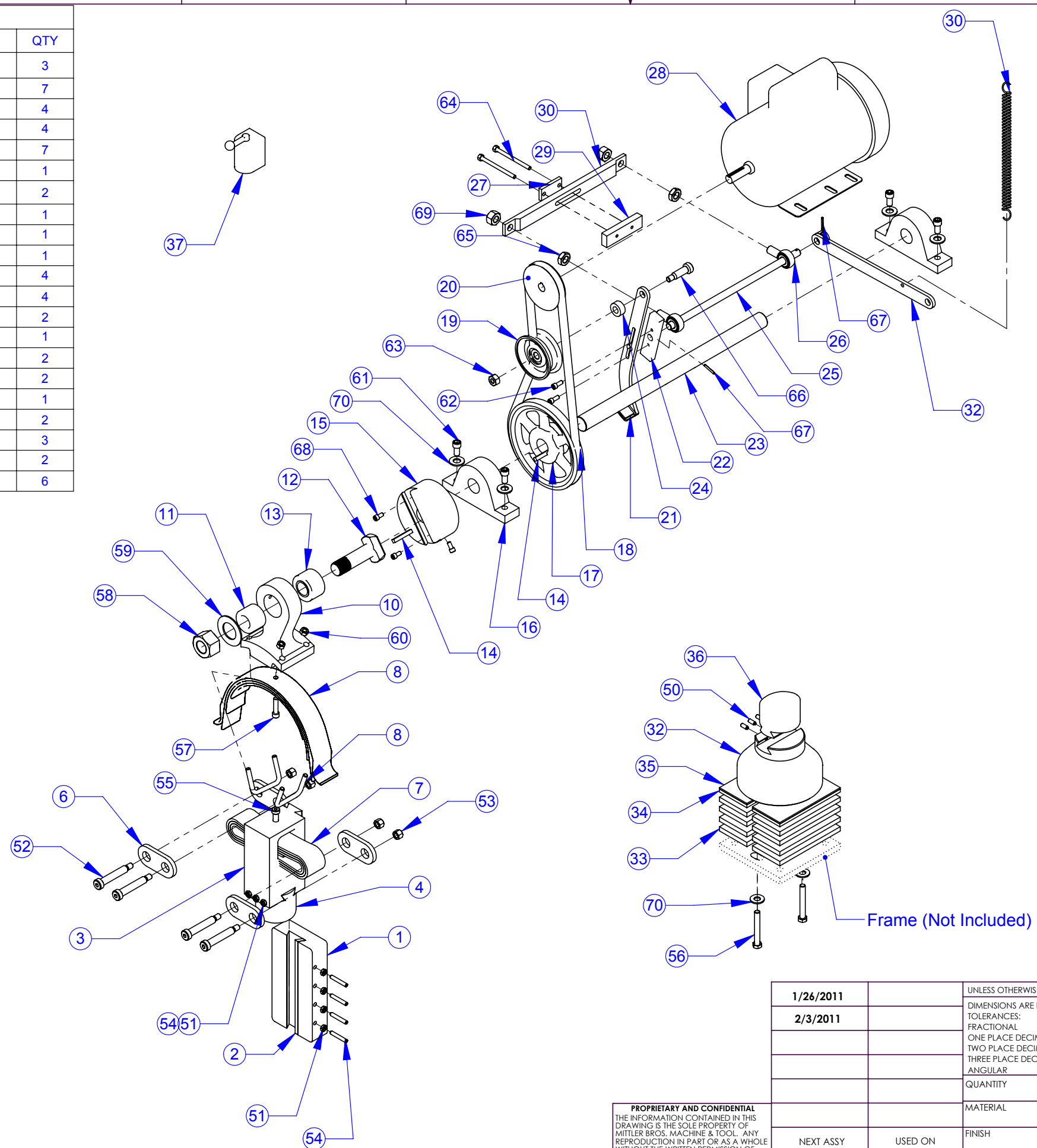
TITLE:
PH Kit/Upper Arm Assmy

SIZE DWG. NO. REV
B 4200-200-1

SCALE: 1:8 WEIGHT: SHEET 1 OF 2

8 7 6 5 4 3 2 1

FASTENERS		
ITEM NO.	DESCRIPTION	QTY
50	1/4-20 x 3/4" Set Screw	3
51	1/4-20 Jam Nut	7
52	3/4 x 2-1/2" SHSB	4
53	5/8-11 Nylock Nut	4
54	1/4-20 x 1-1/2" Set Screw	7
55	3/8 x 2-1/2" SHSB	1
56	1/2-13 x 3" HHCS	2
57	5/16-18 x 1-1/4" SHCS	1
58	1"-14 Nylock Thin Nut	1
59	1" Flat Washer	1
60	3/8-16 Nylock Nut	4
61	1/2-13 x 2" HHCS Grade 5	4
62	1/4-20 x 3/4" SHCS	2
63	1/2-13 Nylock Nut	1
64	1/4-20 x 3-1/4" Hex Head	2
65	1/2-20 Jam Nut	2
66	1/2-13 x 2" HHCS	1
67	Roll Pin 1/8 x 1	2
68	1/4-20 x 1/2" SHCS	3
69	1/2-20 Nyloc Nut	2
70	1/2" Flat Washer	6



ITEM NO.	DESCRIPTION	QTY.
1	Dovetail Slide	1
2	Dovetail Gib	1
3	PH Ram	1
4	Sample Upper Die	1
5		1
6	Link	4
7	Conveyor Strap	1
8	3/8 UBolt - Spring Shackle	2
9	Leaf Spring Assembly	1
10	Connecting Bar	1
11	Needle Bearing/Race	1
12	Crank Pin	1
13	Crank Pin Spacer	1
14	Driveshaft Key	2
15	Fly Wheel	1
16	Ball Bearing Pillow Block	2
17	Large Pulley, Driven	1
18	Drive Belt	1
19	Idler Pulley	1
20	Small Pulley, Driver	1
21	Brake Assembly	1
22	Brake Mounting Bracket	1
23	Driveshaft	1
24	Idler Pulley Spacer	1
25	Clutch Rod	1
26	Clutch Rod End	2
27	Washer Plate	1
28	Motor	1
29	Nut Plate	1
30	Clutch Arm	1
31	Extension Spring	1
32	Clutch Lever Weldment	1
ITEM NO.	Description	QTY.
32	Anvil Base	1
33	3/8 Anvil Shim	4
34	1/4" Anvil Shim	1
35	1/8 Anvil Shim	1
36	Sample Hammer Die	1
37	Drum Switch	1

PROPRIETARY AND CONFIDENTIAL
 THE INFORMATION CONTAINED IN THIS DRAWING IS THE SOLE PROPERTY OF MITTLER BROS. MACHINE & TOOL. ANY REPRODUCTION IN PART OR AS A WHOLE WITHOUT THE WRITTEN PERMISSION OF MITTLER BROS. MACHINE & TOOL IS PROHIBITED.

1/26/2011		UNLESS OTHERWISE SPECIFIED:	NAME	DATE
2/3/2011		DIMENSIONS ARE IN INCHES	DRAWN	BAB
		TOLERANCES:	CHECKED	
		FRACTIONAL ±.015	ENG APPR.	
		ONE PLACE DECIMAL ±.015	MFG APPR.	
		TWO PLACE DECIMAL ±.010	Q.A.	
		THREE PLACE DECIMAL ±.005		
		ANGULAR ± 1°		
		QUANTITY		
		MATERIAL	FINISH	
		FINISH	LENGTH	
NEXT ASSY	USED ON		COMMENTS	
		APPLICATION	DO NOT SCALE DRAWING	

M3 MITTLER BROS. MACHINE & TOOL
 10 Cooperative Way, Wright City MO. 63390
 (636)745-7757 Fax (636)745-2874

TITLE: Powerhammer Kit

SIZE DWG. NO. REV
B 4200-200-1

SCALE: 1:20 WEIGHT: SHEET 2 OF 2