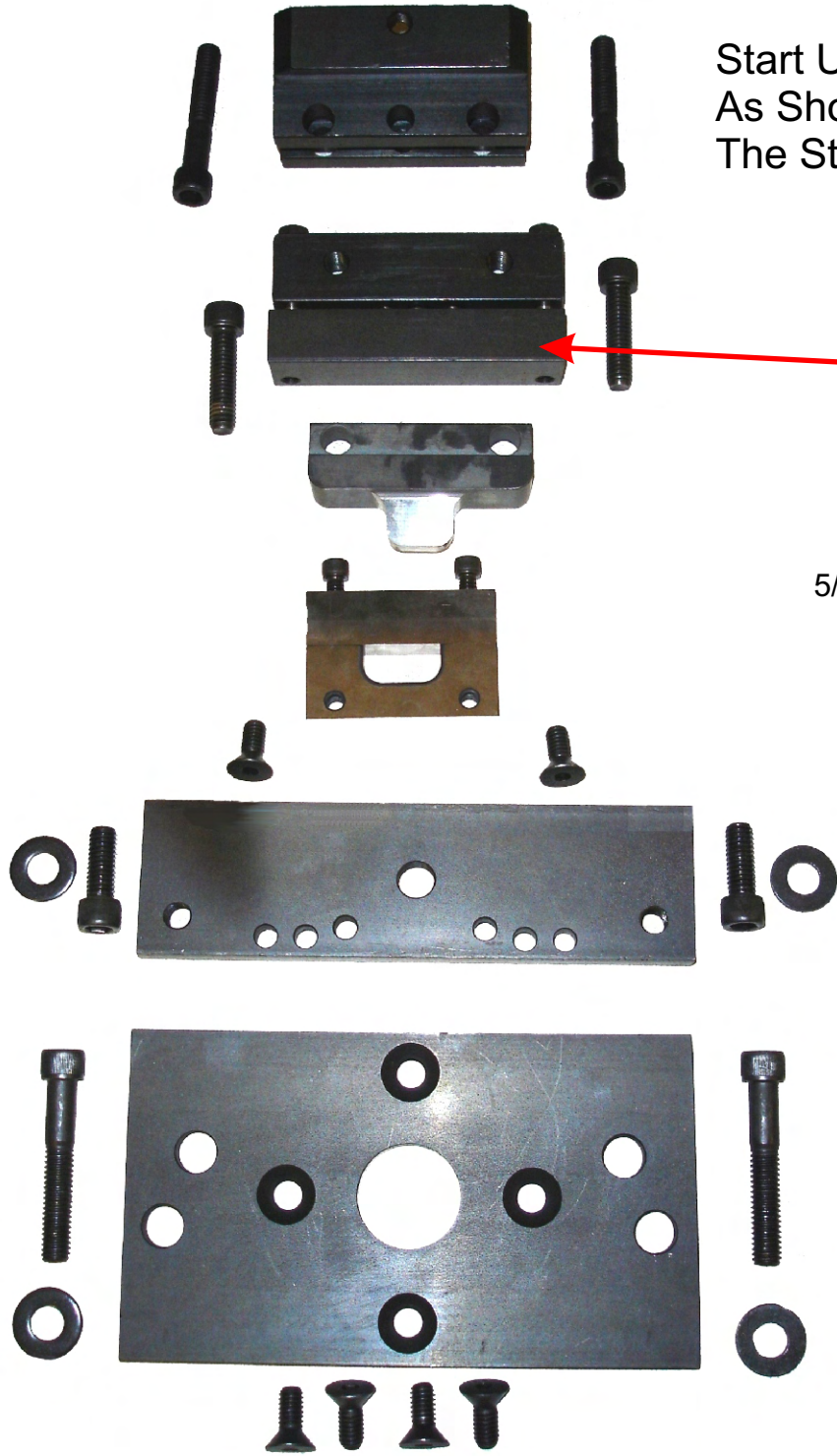


# Bench Press

## Start Up Louver Punch Kits

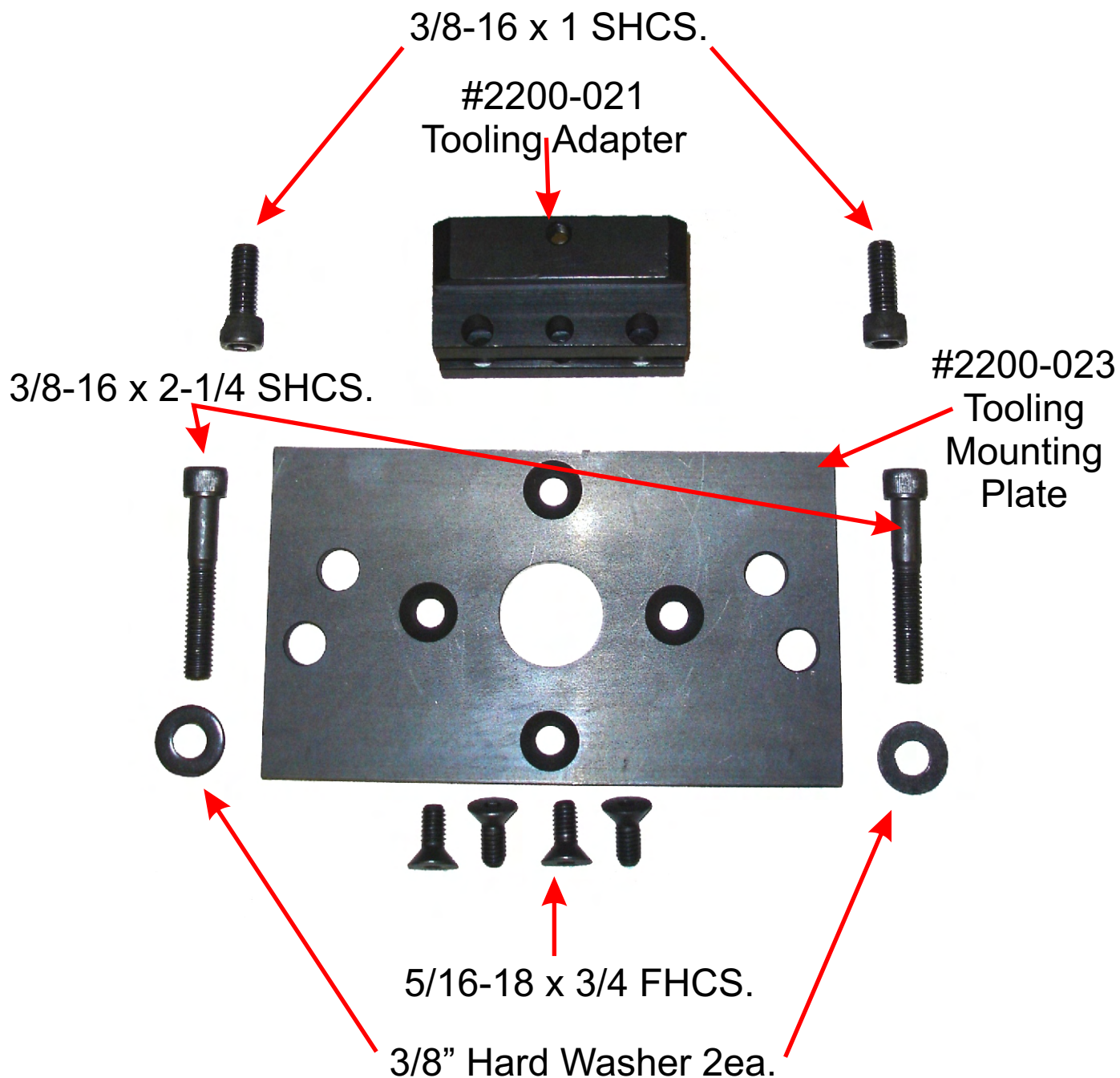
- #2200-LA-01 1" Kit
- #2200-LA-02 2" Kit
- #2200-LA-03 3" Kit
- #2200-LA-04 4" Kit
- #2200-LA-05 5" Kit



Start Up Kits Include All Parts As Shown on Pages 2 & 3 Plus The Stripper Assm. Shown Here.

#500-050  
Stripper Assy.  
consisting of:  
#500-008 Upper Block  
#500-007 Lower Block  
#500-502 Spring 3ea.  
5/16 x1-1/4 Shoulder Bolt 2ea.

# **Bench Press Tooling Adapter Kit #2200.TA**



# Bench Press

## Louver Punch Assemblies

- #500-041 1" Assy.    #500-042 2" Assy.**  
**#500-043 3" Assy.    #500-044 4" Assy.**  
**#500-45 5" Assy.**

- #500-029 1" Die  
 #500-023 2" Die  
 #500-014 3" Die  
 #500-013 4" Die  
 #500-012 5" Die

- #500-028 1" Punch  
 #500-024 2" Punch  
 #500-011 3" Punch  
 #500-010 4" Punch  
 #500-009 5" Punch

- #500-030 1" Shear Plate  
 #500-027 2" Shear Plate  
 #500-016 3" Shear Plate  
 #500-006 4"/ 5" Shear Plate  
 #500-006 4"/ 5" Shear Plate

3/8-16 x 2-1/4 SHCS 2ea.



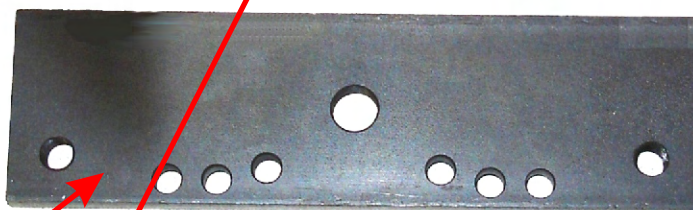
5/16-18 x 3/4 FHCS. 2ea.  
 Not With 4" & 5"



3/8-16 x 1 2ea.



1/4-20 x 1-1/4 SHCS 2ea.  
 Not with 4" & 5"



Die Adapter Plate  
 #500-021  
 Not with 4" & 5"



3/8" Hard Washer 2ea.  
 Not With 4" & 5"

- #500-061 1" Urethane Insert (not shown)  
 #500-062 2" Urethane Insert (not shown)  
 #500-063 3" Urethane Insert (not shown)  
 #500-064 4" Urethane Insert (not shown)  
 #500-065 5" Urethane Insert (not shown)



3/8-16 x 1-1/2 SHCS 2ea.  
 4" & 5" Only