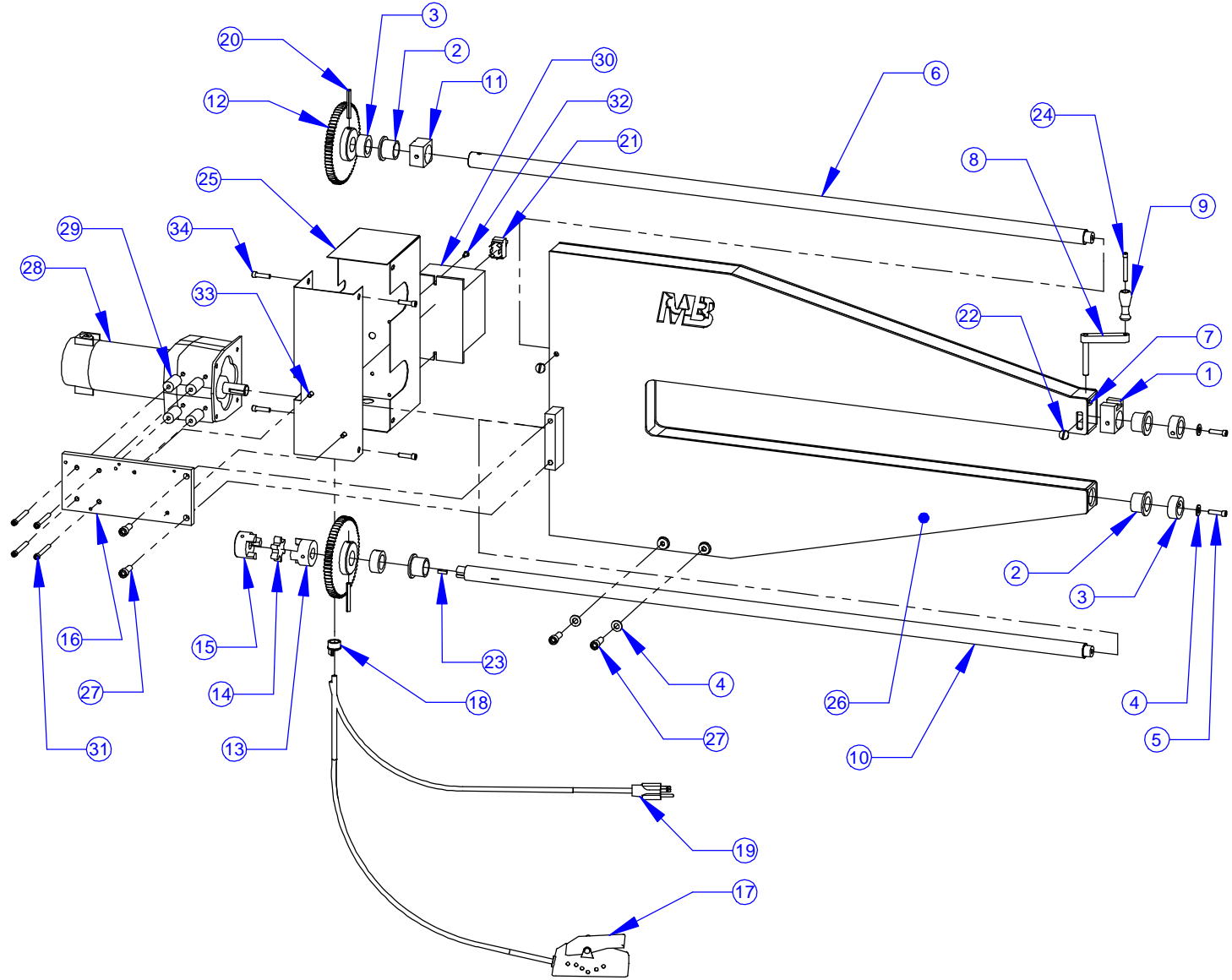


ITEM NO.	PART NUMBER	Description	QTY.
1	200-016	Adj Upper Bearing Block	1
2	200-501	Flanged Bronze Bushing	4
3	200-502	1" I.D. Set Collar	4
4	Flat Washer	Flat Washer 3/8"	4
5	HX-SHCS 0.375-16X1X1-N	Socket Head Cap Screw	2
6	200-061-U	Upper Shaft - 36"	1
7	200-023	T-Nut	1
8	200-026	Handle Mount	1
9	200-110	Alum. Handle	1
10	200-061-L	Lower Drive Shaft - 36"	1
11	200-017	Upper Bearing Block	1
12	204-024	Gear for 4" Throat	2
13	200-504	3/4" Coupling Half	1
14	200-505	Spider	1
15	200-503	1/2" Coupling Half	1
16	200-013	Motor Mount Plate	1
17	200-520 & 508	Foot Pedal & Wire Assembly	1
18	200-517	1/2" Romex Connector	1
19	200-542	Electrical Cord w/ Plug (16/4)	1
20	200-519	Roll Pin, 1/4" x 2"	2
21	200-507	Reversing Switch	1
22	200-514	Lock Screw	2
23	Key Stock	3/16" Key Stock	1
24	200-516	Socket Head Cap Screw	1
25	204-406	Gear Box	1
26	204-36-400	Frame Assembly	1
27	HX-SHCS 0.375-16x1x1-C	Socket Head Cap Screw	4
28	200-526	Motor	1
29	204-001-NV	Motor Spacer	4
30	200-527	Control, Variable Speed	1
31	HX-SHCS 0.25-20x2.25x2.25-C	Socket Head Cap Screw	4
32	SBHCSCREW 0.19-32x0.5-HX-C	Button Head Cap Screw	2
33	SBHCSCREW 0.25-20x0.5-HX-C	Button Head Cap Screw	2
34	HX-SHCS .025-20x1.0x1.0-C	Socket Head Cap Screw	2



PROPRIETARY AND CONFIDENTIAL
 THE INFORMATION CONTAINED IN THIS DRAWING IS THE SOLE PROPERTY OF MITTLER BROS. MACHINE & TOOL. ANY REPRODUCTION IN PART OR AS A WHOLE WITHOUT THE WRITTEN PERMISSION OF MITTLER BROS. MACHINE & TOOL IS PROHIBITED.

		UNLESS OTHERWISE SPECIFIED:		NAME	DATE	MB MITTLER BROS. MACHINE & TOOL 10 Cooperative Way, Wright City, MO. 63390 (636)745-7757 Fax (636)745-2874
		DIMENSIONS ARE IN INCHES TOLERANCES: FRACTIONAL ±.015 ONE PLACE DECIMAL ±.015 TWO PLACE DECIMAL ±.010 THREE PLACE DECIMAL ±.005 ANGULAR ±1°	DRAWN	BAB	12/8/11	
		QUANTITY	CHECKED			TITLE: 36" Ind VS Bead Roller-4" Deep
		MATERIAL	ENG APPR.			SIZE DWG. NO. REV A 204-36NV-000
NEXT ASSY	USED ON	FINISH	MFG APPR.	Q.A.		SCALE: 1:11 WEIGHT: SHEET 1 OF 1
APPLICATION		DO NOT SCALE DRAWING	COMMENTS			