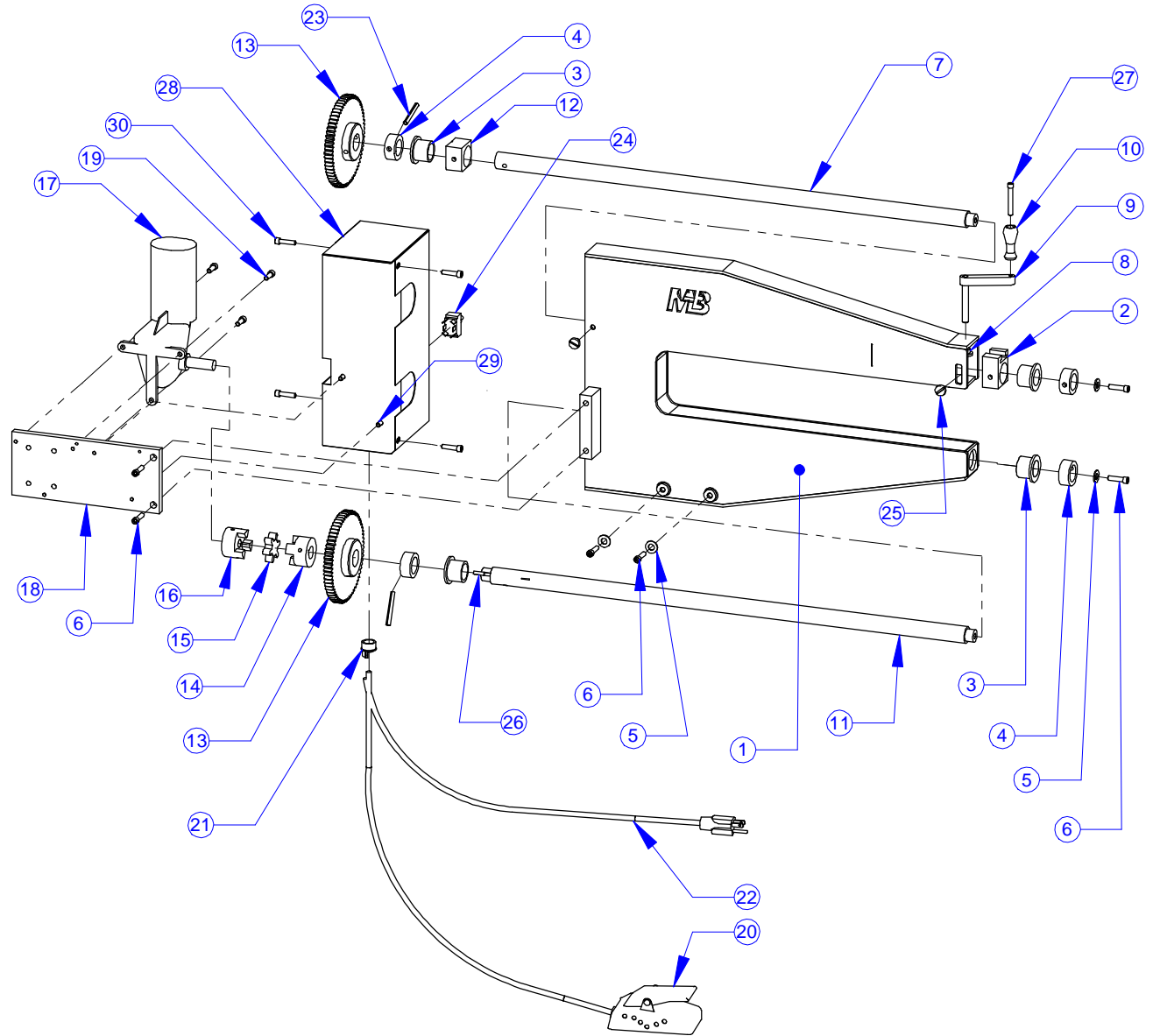


ITEM NO.	PART NUMBER	Description	QTY.
1	204-24-400	Frame Assembly	1
2	200-016	Adj Upper Bearing Block	1
3	200-501	Flanged Bronze Bushing	4
4	200-502	1" I.D. Set Collar	4
5	Flat Washer	Flat Washer 3/8"	4
6	HX-SHCS 0.375-16X1X1-N	Socket head cap screw	6
7	200-022-U	Upper Shaft	1
8	200-023	T-Nut	1
9	200-026	Handle Mount	1
10	200-110	Alum. Handle	1
11	200-022-L	Lower Drive Shaft	1
12	200-017	Upper Bearing Block	1
13	204-024	Gear for 4" Throat	2
14	200-504	3/4" Coupling Half	1
15	200-505	Spider	1
16	200-503	1/2" Coupling Half	1
17	200-506	1LRA5	1
18	200-013	Motor Mount Plate	1
19	HX-SHCS 0.25-20x0.75x0.75-N	Socket head cap screw	3
20	200-520 & 508	Foot Pedal & Wire Assembly	1
21	200-517	1/2" Romex Connector	1
22	200-542	Electrical Cord w/ Plug (16/4)	1
23	200-519	Roll Pin, 1/4" x 2"	2
24	200-507	Reversing Switch	1
25	200-514	Lock Screw	2
26	Key Stock	3/16" Key Stock	1
27	200-516	Socket head cap screw	1
28	204-406	Gear Box	1
29	SBHCSCREW 0.25-20x0.5-HX-C	Button Head Cap Screw	2
30	HX-SHCS 0.25-20-1x1-C	Socket Head Cap Screw	4



**PROPRIETARY AND CONFIDENTIAL**  
 THE INFORMATION CONTAINED IN THIS DRAWING IS THE SOLE PROPERTY OF MITTLER BROS. MACHINE & TOOL. ANY REPRODUCTION IN PART OR AS A WHOLE WITHOUT THE WRITTEN PERMISSION OF MITTLER BROS. MACHINE & TOOL IS PROHIBITED.

12/13/11		UNLESS OTHERWISE SPECIFIED: DIMENSIONS ARE IN INCHES TOLERANCES: FRACTIONAL ±.015 ONE PLACE DECIMAL ±.015 TWO PLACE DECIMAL ±.010 THREE PLACE DECIMAL ±.005 ANGULAR ±1°	DRAWN	NAME	DATE	<b>MB MITTLER BROS. MACHINE &amp; TOOL</b> 10 Cooperative Way, Wright City, MO. 63390 (636)745-7757 Fax (636)745-2874 TITLE: <b>24" - 4" Deep Bead Roller</b> SIZE DWG. NO. REV <b>A 204-24-000</b>		
		QUANTITY	CHECKED	BAB	2/3/11			
		MATERIAL	MFG APPR.					
		FINISH	Q.A.					
			COMMENTS					
NEXT ASSY	USED ON	APPLICATION	DO NOT SCALE DRAWING			SCALE: 1:10	WEIGHT:	SHEET 1 OF 1